



Avenue Boutique CONDOMINIUM

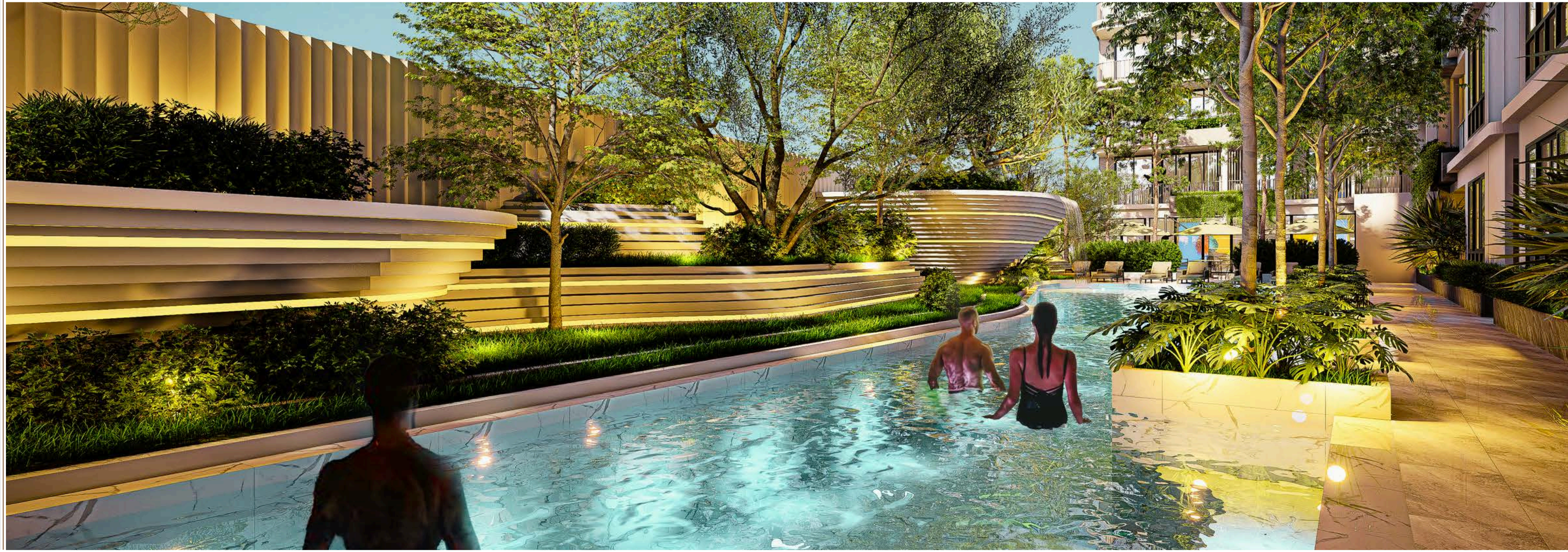


A BRAND-NEW LOW-RISE CONDOMINIUM

MORE THAN JUST A CONDOMINIUM

Slow down and
enjoy your life with

**GROUND
POOL**



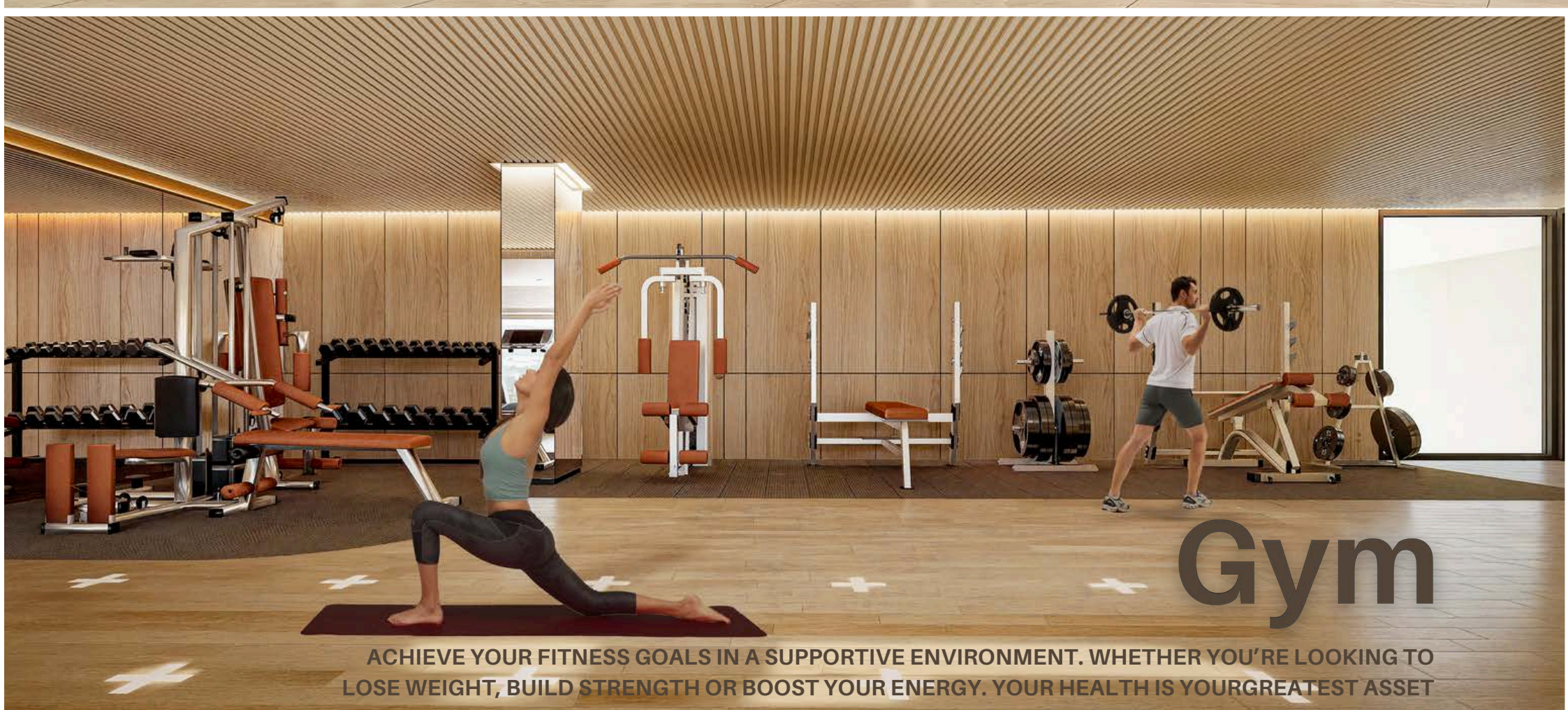
Keep calm
and enjoy the view

**ROOFTOP
GARDEN**





Lobby



Gym

ACHIEVE YOUR FITNESS GOALS IN A SUPPORTIVE ENVIRONMENT. WHETHER YOU'RE LOOKING TO LOSE WEIGHT, BUILD STRENGTH OR BOOST YOUR ENERGY. YOUR HEALTH IS YOUR GREATEST ASSET



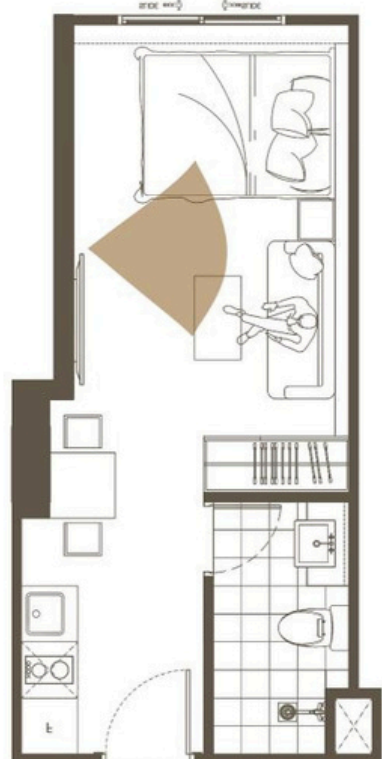
Steam

STEP INTO OUR STEAM EXPERIENCE. DESIGNED TO CLEANSE, CALM AND INVIGORATE, OUR STEAM ROOM ENVELOPS YOU IN A GENTLE MIST THAT NURTURES BOTH BODY AND MIND

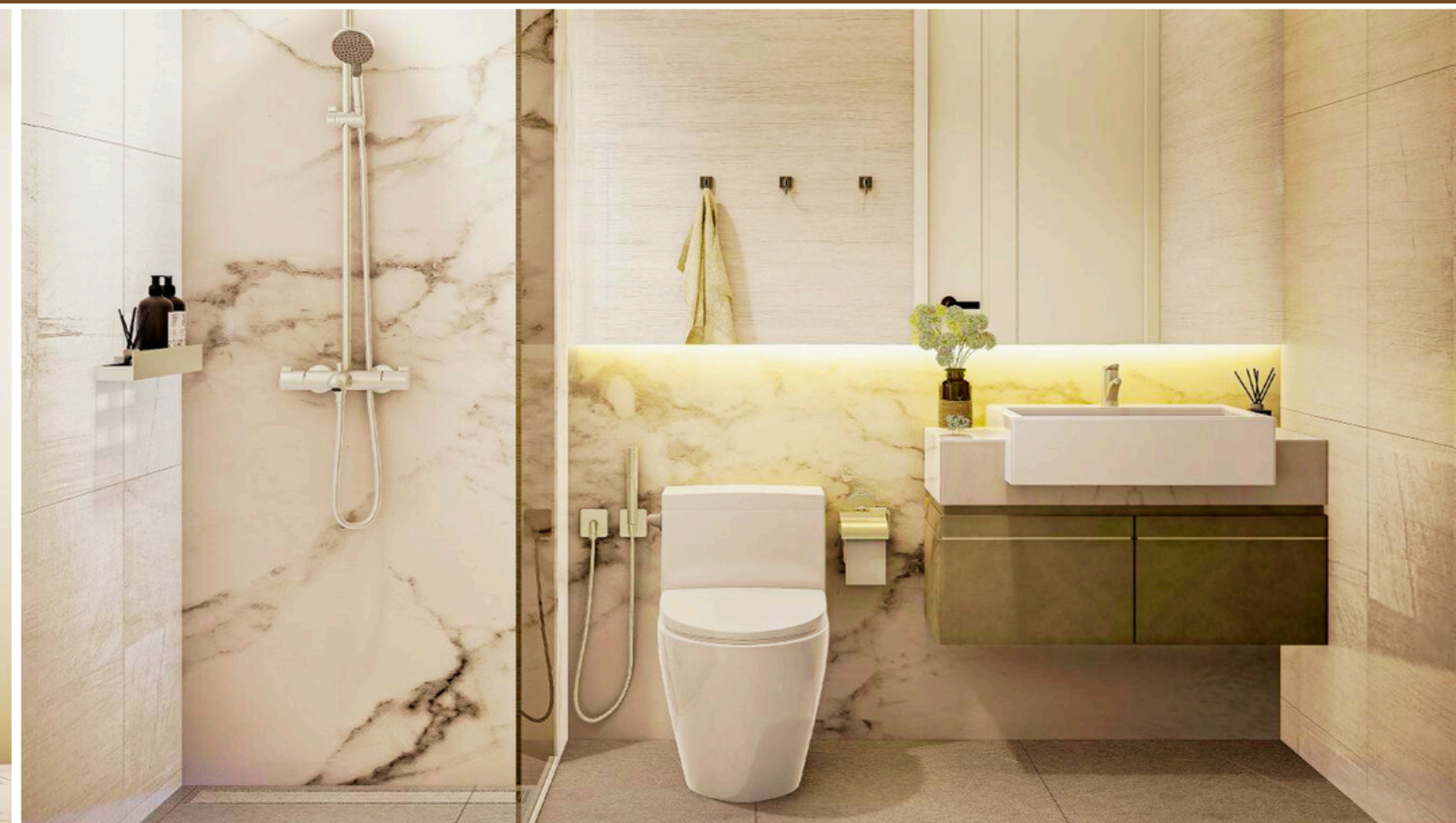
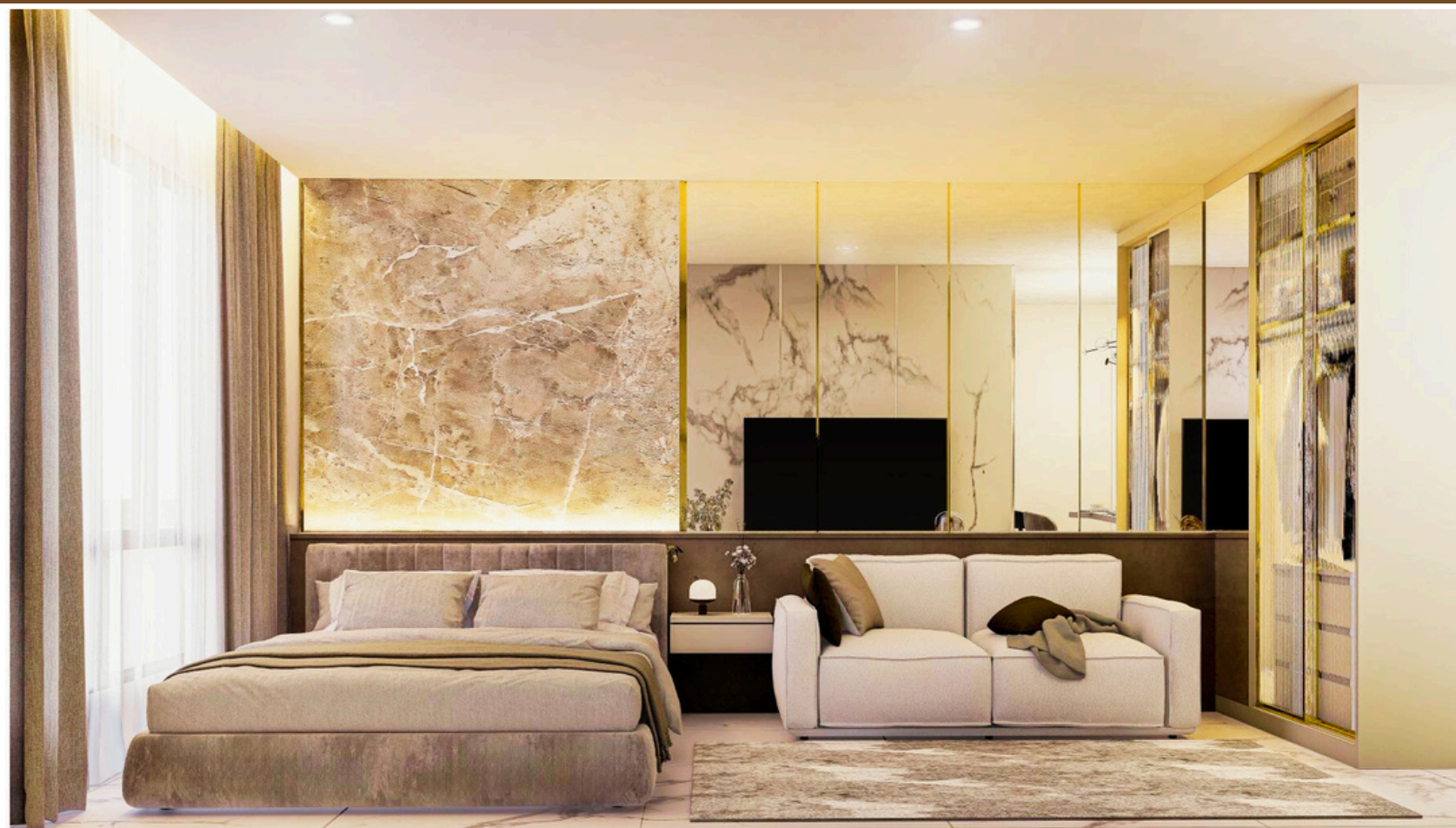


Sauna

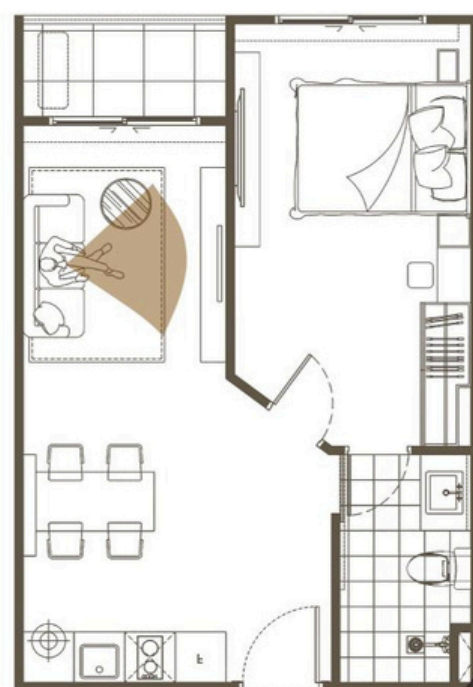
INDULGE IN THE ULTIMATE ESCAPE WITH OUR STATE-OF-THE-ART SAUNA, DESIGNED TO REJUVENATE YOUR BODY, CALM YOUR MIND AND ELEVATE YOUR WELL-BEING



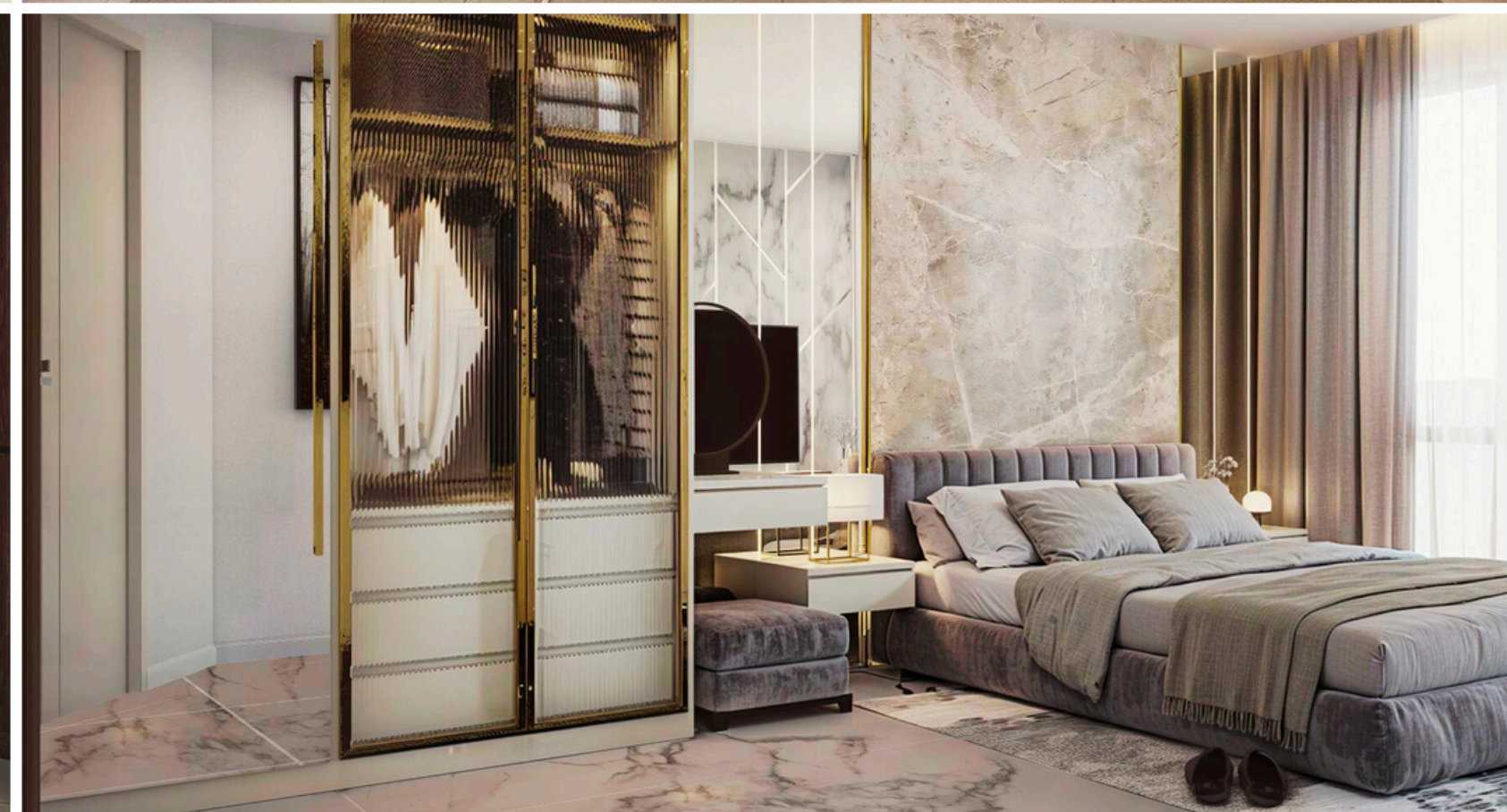
25.65 Sq.m.



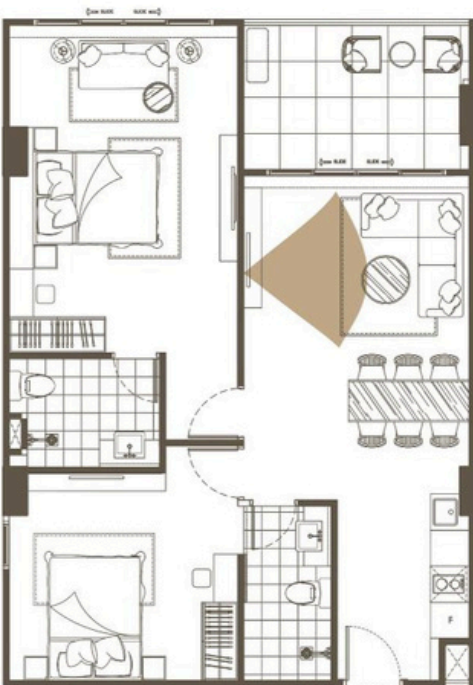
STUDIO ROOM
16 Units
25.60 - 25.65 Sq.m.



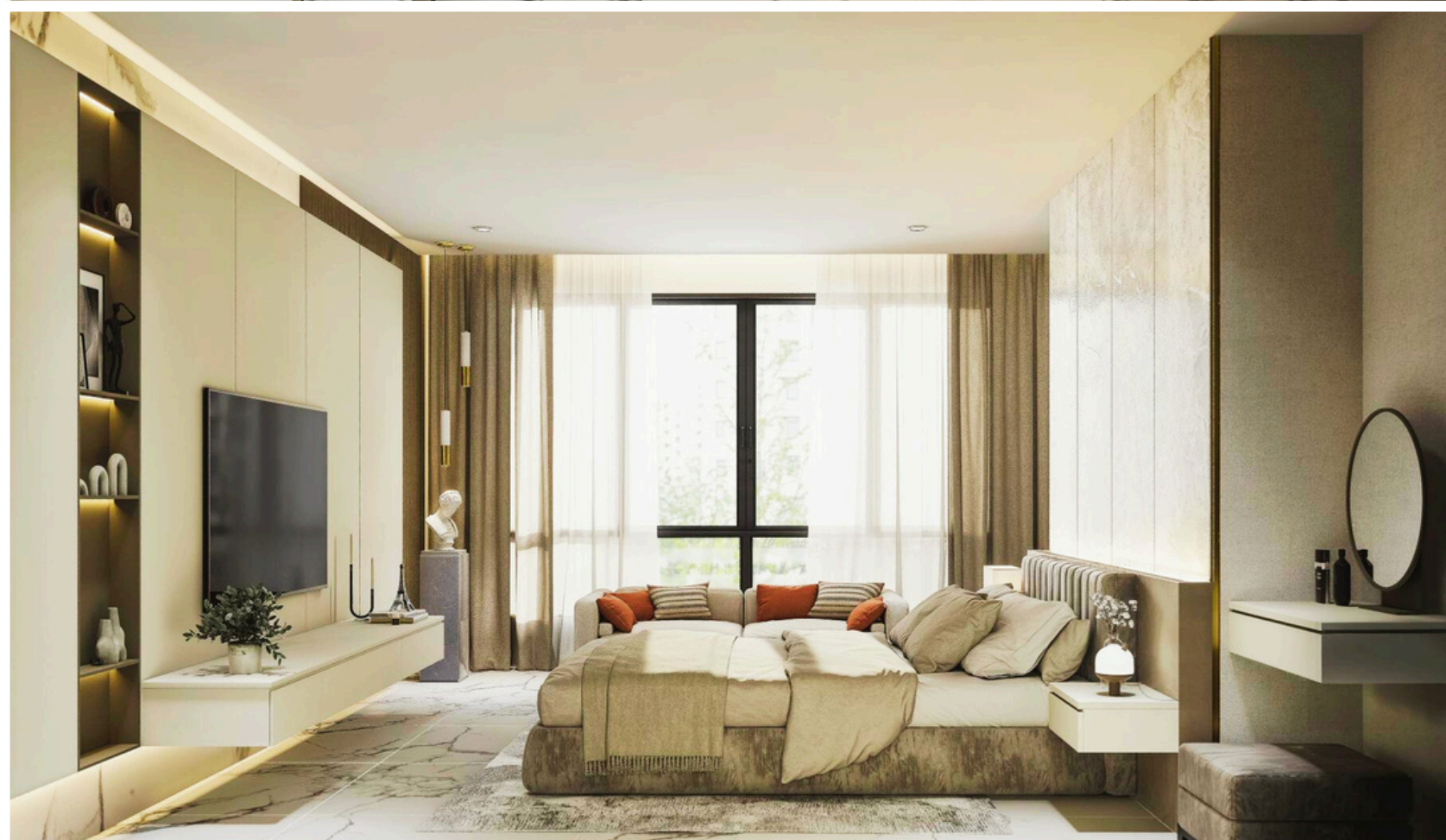
41.75 Sq.m.



1 BEDROOM
209 Units
34.55 - 56.90 Sq.m.



82.95 Sq.m.



2 BEDROOMS
51 Units
55.15 - 84.50 Sq.m.

1ST FLOOR PLAN

LUXURY CONDOMINIUM RESIDENCES



BUILDING B

BUILDING A



2ND - 8TH FLOOR PLAN

SURROUNDED BY LUXURIOUS LIFESTYLE SOURCES, COMPLETE LIFE IN A PERFECT LOCATION IN THE HEART OF PATTAYA, WHERE YOU CAN TRAVEL CONVENIENTLY CONNECTED TO THE MAIN ROAD TO CENTRAL PATTAYA BEACH.

WHEREVER YOU GO GO WITH ALL YOUR HEART

PERFECTLY POSITION
Soi Buakhao 15, Pattaya

Avenue Boutique offers the ultimate blend of comfort and convenience. The iconic away Placing world-renowned nightlife and entertainment within easy reach. With seamless access to both Pattaya City and Jomtien Beach. This prime location is ideal for residents and investors seeking both tranquility and connectivity in one of Thailand's most dynamic coastal cities.

- 500 METERS FROM "PATTAYA BEACH"
- 600 METERS FROM "TREE TOWN NIGHTMARKET"
- 750 METERS FROM "MIKE SHOPPING MALL"
- 850 METERS FROM "TUKCOM"
- 1 KILOMETER FROM "CENTRAL FESTIVAL PATTAYA"
- 1.2 KILOMETER FROM "WALKING STREET"

