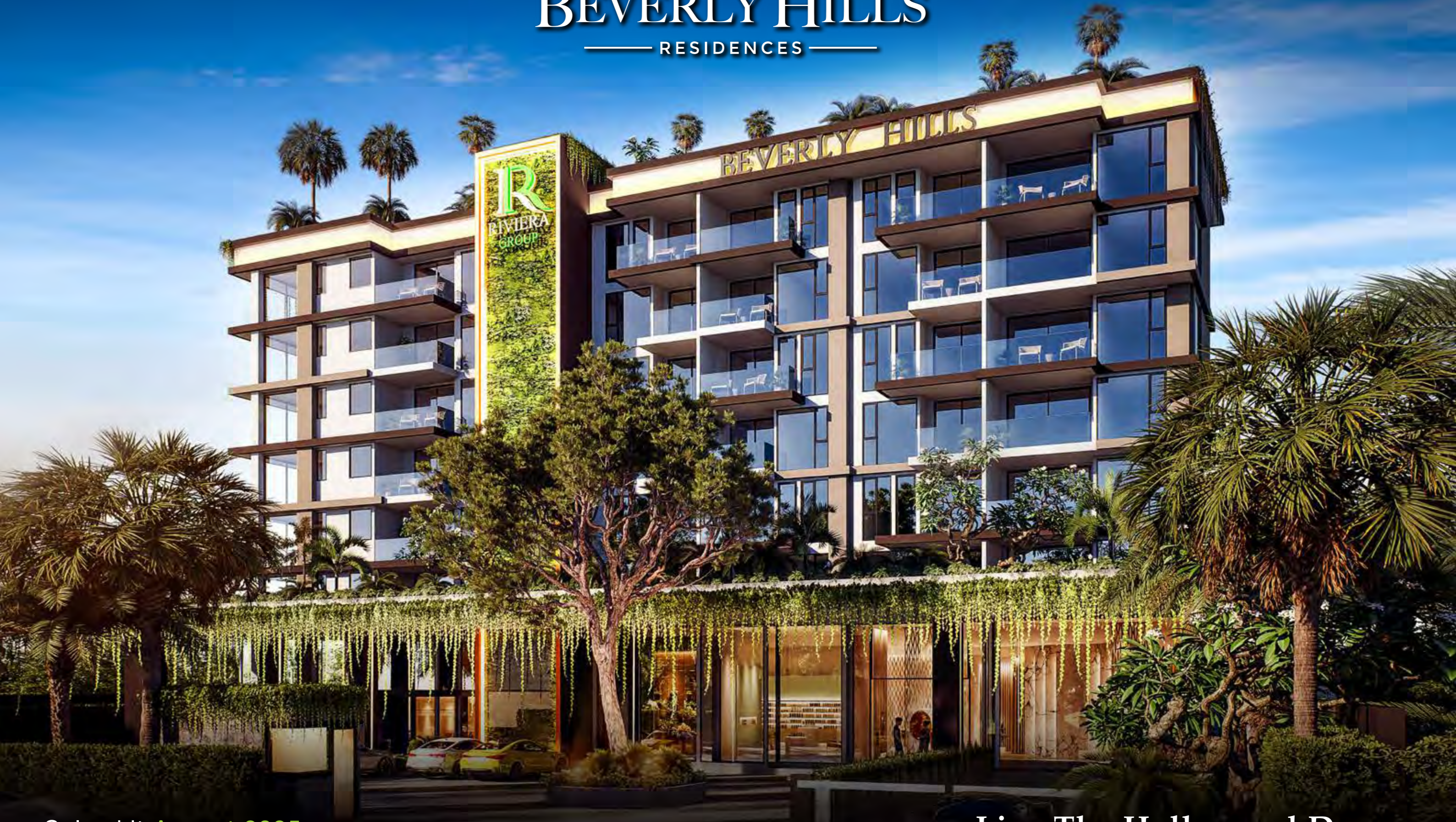


THE  
RIVIERA  
BEVERLY HILLS  
RESIDENCES



Sales kit August 2025

Live The Hollywood Dream



THE RIVIERA  
**BEVERLY HILLS**  
RESIDENCES

Beverly Hills needs no introduction. The LA Capital of high living, where those fortunate few live in the hills overlooking Hollywood and the exciting surrounding areas. The Riviera Group continues on their Branded LA concept design with this all new Stunning 3 Building Low-Rise Development.

Blending a Relaxing Quality Lifestyle with an upmarket tone, this Development is designed for both Professional Individuals and Couples, with plenty of features for those with Families and children looking for those special times.

Just 469 Luxury Units spread over 3 elegant Buildings, all Fully Fitted to our typical Riviera Quality, with large pools and facilities to enjoy.

The location is set amongst a bustling, long established residential area within Jomtien, close to many Convenience Stores, a variety of Shops, Restaurants and Recreational Attractions.

Only one minute from Jomtien's 2nd Road granting access to the Beach and Pattaya's extensive commuting roads. This project and location make for an exciting 2nd home or an excellent long-term investment for those looking for something special without the price.





PATTAYA'S NO.1  
MULTI-AWARD WINNING  
DEVELOPER



13 Times  
Thailand Property  
Awards Winner



57 Times  
Asia Pacific Property  
Awards Winner



## Desirable Living... For Everyone

The Beverly Hills Residence promises to be every bit the exciting Property to live in as the name says.

Feel like a Star, every day in this Quality Development where detailing is designed to the highest priority. Feel Special with the Hollywood vibe as we provide a mix of tropical and celebrity design, reflecting a fun, desirable place to live.

Smart, modern facilities allow you to enjoy life to the max, with a centrally located Restaurant and Bar, both enjoyed either open air or air-conditioned depending on your mood. A Rooftop Pool in The Bel Air Club House promises to enhance your senses as you enjoy the Sunkissed Afternoons, your way.

All this with the security of being developed by The Riviera Group, Pattaya's No.1 leading Luxury Property Developer. Multi-Award Winning since 2010 and voted 'Best Eastern Seaboard Developer 2023' by Thailand Property Awards.

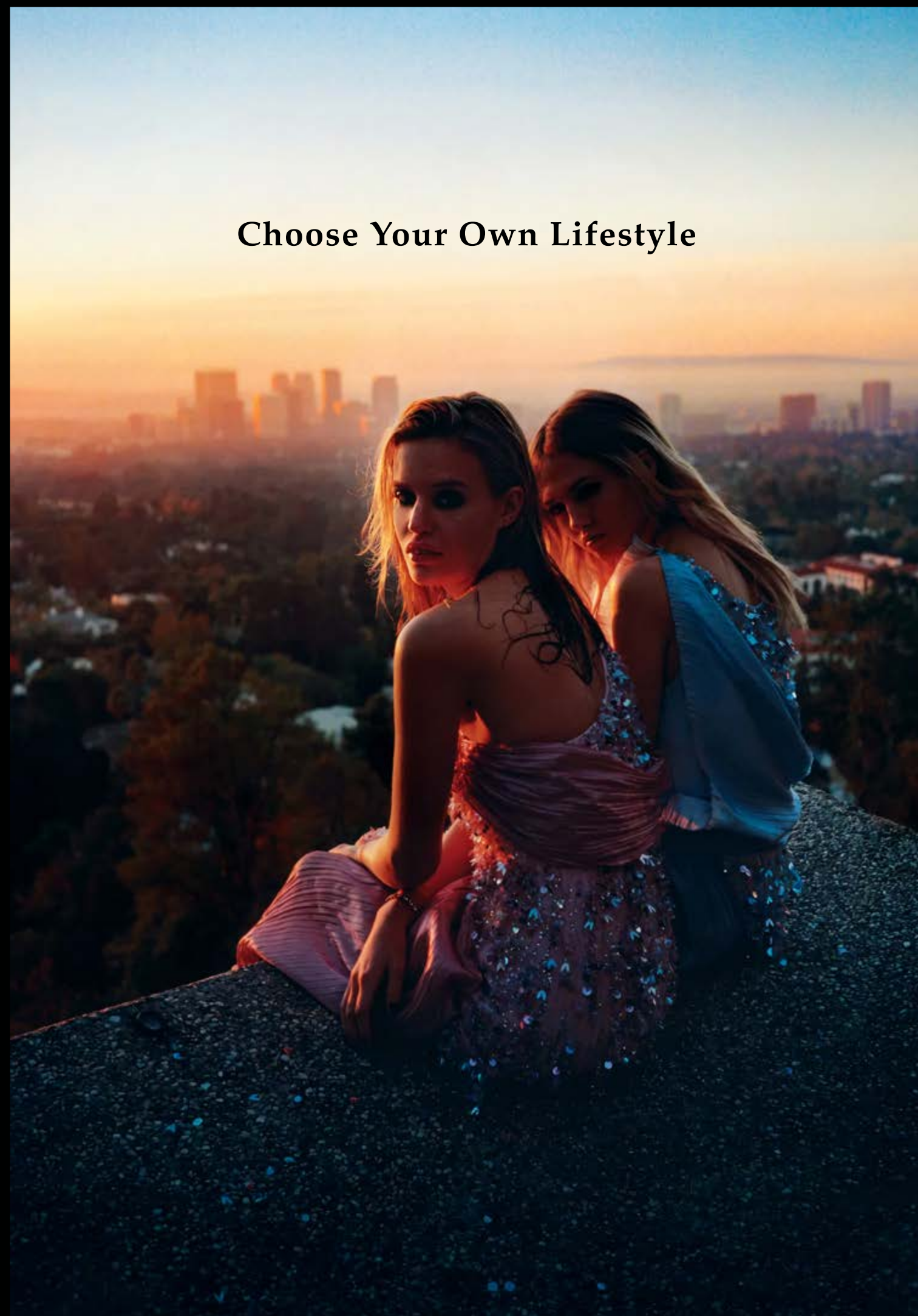
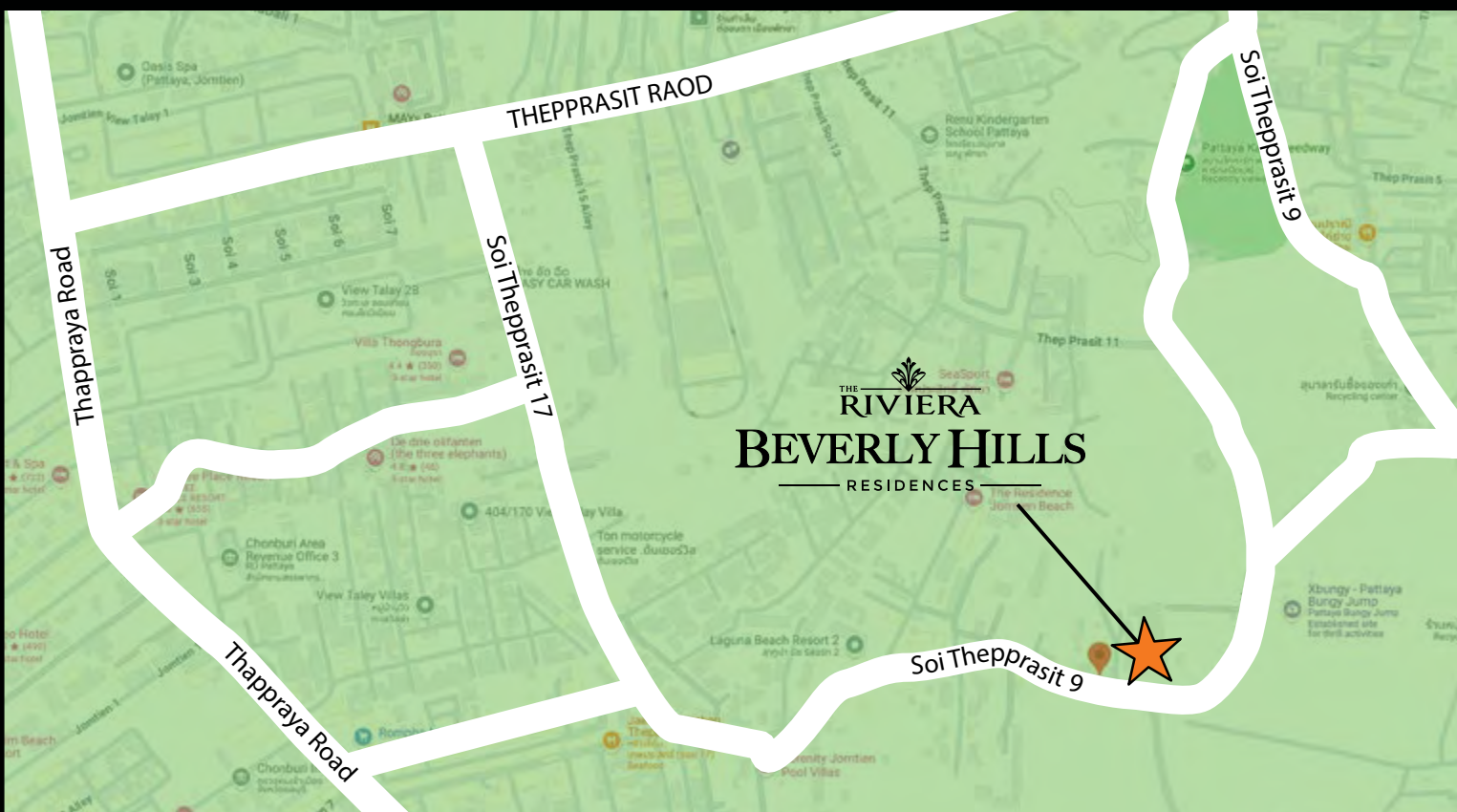
Well-known for luxury High-Rise Developments, strong detailing and designed to the highest of international standards, this experience and pedigree is backed by Strong Financial Support from leading Commercial Thai Banks.

This is the first 'Low-Rise Development from Pattaya's Luxury High-Rise Developer, and so promises to be an Outstanding first in their ever-growing Portfolio of Award-Winning Projects  
by **The Riviera Group**



## Excellent LOCATION

Centrally Located in Jomtien, Access made easy and Surrounded by Established Properties, Life couldn't get easier.



Choose Your Own Lifestyle



# PROJECT LOCATIONS

RIVIERA  
**MALIBU**  
RESIDENCES

RIVIERA  
**CALIFORNIA**

RIVIERA  
**OCEAN DRIVE**

THE  
**PALM**  
WONGAMAT BEACH  
PATTAYA

THE  
**RIVIERA**  
WONGAMAT BEACH

THE  
**RIVIERA**  
**BEVERLY HILLS**  
RESIDENCES

THE  
**RIVIERA**  
JOMTIEN

RIVIERA  
**SANTA MONICA**  
JOMTIEN

Jomtien 2nd Rd

Jomtien Beach Rd

Chaiyapruerk Rd

Jomtien 2nd Rd

RIVIERA  
**MONACO**

Sukhumvit Rd

JOMTIEN BEACH

The Finest Luxury Developments

Where Details, Quality and Lifestyle Matter





# THE *Bel Air* CLUBHOUSE

## Your Facilities

### Lower Level - All Areas Air-Conditioned

- Full-size Enclosed Badminton Court with Lounge Spectator Area
- Male and Female Extensive Separate Onsen
- Steam, Sauna Room, Cold Plunge and Changing Rooms
- Advanced Spinning Bike Zone with 4m Wide Projection Screen
- Golf Simulator Room with relaxing Lounge environment

### Ground Floor

- Indoor Air-Conditioned and Outdoor Terrace Restaurant with Open Style Kitchen
- Coffee Corner for that daily 'Hang-Out'
- Large Luxury Lobby with Views to the Pool Area
- Outside Decking Area for Lounging
- Male and Female WC



PATTAYA'S NO.1  
MULTI-AWARD WINNING  
DEVELOPER



13 Times  
Thailand Property  
Awards Winner



57 Times  
Asia Pacific Property  
Awards Winner



PATTAYA'S NO.1  
MULTI-AWARD WINNING  
DEVELOPER



13 Times  
Thailand Property  
Awards Winner



57 Times  
Asia Pacific Property  
Awards Winner



## Your Facilities

### 2nd Floor

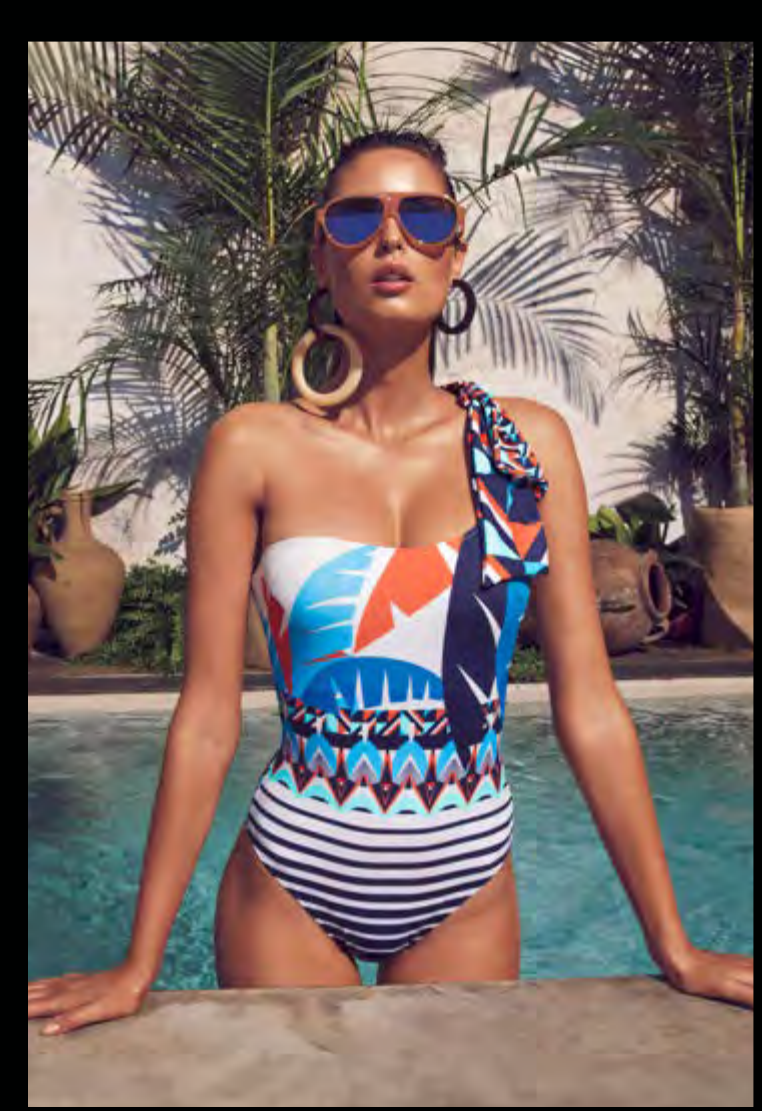
- Outdoor 'Chill' Bar with Lounge Terrace
- Indoor Air-Conditioned Club Lounge
- Pool and Table Tennis Games
- Male and Female WC

### 3rd Floor

- 24 Hour Extensive Quality Gym including Cardio Equipment with Free Weights Area and various Static Exercising Machines
- Boxing Ring for those 'Boxercise' Workouts
- Male and Female Changing Facilities and WC
- Kids Club

### 4th Floor

- Veranda Sunset Bar with Large Terraced Lounge Areas
- 24m Pool with Jacuzzi
- Floating Pool Beds
- Sunlounge Decking Areas





## Your Endless Family Facilities

### General - Ground Floor Areas

- A Large 66m Long Laguna Pool, with Convenient Split Levels and Floating Sunbeds surrounding the Bel Air Clubhouse
- A further 62m Laguna Pool offering a more Quieter Relaxation space
- Large Hotel-Styled Designer Lobby with Large Roofed Drop-Off Area
- 4 Multi-Use Shops for Convenience
- Large Decking areas with Lounge Seating and Sunbeds
- Waterfalls and Rock Features
- Various Kids Sliders and Kids Pools
- Running Track - 200m (400m Circuit)
- Quiet Relaxing Sala Areas
- Heavily Landscaped (Riviera Styled) Nature-led Environment
- Entrance Security and CCTV
- Visitors Car Parking Area





## Your Seperate Building Facilities

### Orange GROVE

- Multi-Levelled Gardens with Sala Lounge Areas
- Full Size Pickleball Court
- 3rd Floor Garden Area overlooking the Front of the Project

### Emerald BAY

- Multi-Levelled Gardens with Sala Lounge Areas
- Terrace Lounge Area - Undercover with Decking and Refreshment Bar
- Kids Playground

### Lemon GROVE

- Multi-Levelled Gardens with Sala Lounge Areas
- Full Size Doubles Tennis Court





**Lemon GROVE**  
169  
Residences

**Emerald BAY**  
139  
Residences

**Orange GROVE**  
161  
Residences



**Bel Air CLUBHOUSE**

**ORANGE GROVE**

8	821	66	820	53	819	34	818	32	817	35	816	27	815	35	814	66	812	33	811	32	810	33	809	32	808	33	807	32	806	51	805	37	804	35	803	35	802	35	801	39				
7	722	29	721	35	720	53	719	34	718	32	717	35	716	27	715	35	714	35	713	26	712	33	711	32	710	33	709	32	708	33	707	32	706	51	705	37	704	35	703	35	702	35	701	39
6	622	29	621	35	620	53	619	34	618	32	617	35	616	27	615	35	614	35	613	26	612	33	611	32	610	33	609	32	608	33	607	32	606	51	605	37	604	35	603	35	602	35	601	39
5	522	29	521	35	520	53	519	34	518	32	517	35	516	27	515	35	514	35	513	26	512	33	511	32	510	33	509	32	508	33	507	32	506	51	505	37	504	35	503	35	502	35	501	39
4	422	29	421	35	420	53	419	34	418	32	417	35	416	27	415	35	414	35	413	26	412	33	411	32	410	33	409	32	408	33	407	32	406	51	405	37	404	35	403	35	402	35	401	39
3	322	29	321	35	320	53	319	34	318	32	317	35	316	27	315	35	314	35	313	26	312	33	311	32	310	32	309	31	308	32	307	31	306	51	305	37	304	35	303	35	302	35	301	39
2	LOBBY		220	35	219	34	218	32	217	35	216	27	215	35	214	35	213	26	212	33	211	32	210	33	209	32	208	33	207	32	SHOP 4	SHOP 3	SHOP 2	SHOP 1					LOBBY					
1			120	35	119	34	118	32	117	35	116	27	115	35	114	35	113	26	112	33	111	32	110	28	109	31	108	32	JURISTIC		119	86	80	76										

**EMERALD BAY**

8	817		111	816	32	815	32	814	32	813	32	812	33	811	32	810	33	809	32	808	32	807	66	806	38	805	40	804	38	803	40	802	39	801	92	
7	717		111	716	32	715	32	714	32	713	31	712	32	711	31	710	32	709	32	708	32	707	69	706	38	705	39	704	38	703	39	702	39	701	92	
6	617		111	616	32	615	32	614	32	613	32	612	33	611	32	610	33	609	32	608	32	607	66	606	38	605	40	604	38	603	40	602	39	601	92	
5	517		111	516	32	515	32	514	32	513	31	512	32	511	31	510	32	509	32	508	32	507	69	506	38	505	39	504	38	503	39	502	39	501	92	
4	418	64	417	39	416	32	415	32	414	32	413	32	412	33	411	32	410	33	409	32	408	32	407	66	406	38	405	40	404	38	403	40	402	58	401	64
3	318	66	317	39	316	32	315	32	314	32	313	31	312	32	311	31	310	32	309	32	308	32	307	69	306	38	305	39	304	38	303	39	302	57	301	67
2	218	64	217	39	216	32	215	32	214	32	213	32	212	33	211	32	210	33	209	32	208	32	207	66	206	38	205	40	204	38	203	40	202	58	201	64
1	118	66	117	39	116	32	115	32	114	32	113	31	112	32	111	31	110	32	109	28	108	32	107	69	106	38	105	39	104	38	LOBBY		102	57	101	67

**LEMON GROVE**

8	823	33	822	32	820		63	819	31	818	32	817	31	816	32	815	32	814	33	812		65	811	34	810	35	809	36	808	34	807	35	806		71	804	35	803	34	802	34	801	24		
7	723	33	722	32	721	32	720	33	718		33	717	32	716	33	715	33	714	33	713	29	712	35	711	34	710	35	709	36	708	34	707	35	706		71	704		71	702	34	701	24		
6	623	33	622	32	620		63	619	31	618	32	617	31	616	32	615	32	614	33	613	29	612	35	611	34	610	35	609	36	608	34	607	35	606	36	605	36	604		71	602	34	601	24	
5	523	33	522	32	521	32	520	33	518		33	517	32	516	33	515	33	514	33	513	29	512	35	511	34	510	35	509	36	508	34	507	35	506	36	505	36	504		71	502	34	501	24	
4	423	33	422	32	420		32	419	31	418	32	417	31	416	32	415	32	414	33	413	29	412	35	411	34	410	35	409	36	408	34	407	35	406	36	405	36	404	35	403	34	402	34	401	24
3	323	33	322	32	321	32	320	33	319	32	318	33	317	32	316	33	315	33	314	33	313	29	312	35	311	34	310	35	309	36	308	34	307	35	306		71	304	35	303	34	302	34	301	24
2	223	33	222	32	220		32	219	31	218	32	217	31	216	32	215	32	214	33	213	29	212	35	211	34	210	35	209	36	208	34	207	35	206	36	205	36	204	35	203	34	202	34	201	24
1	123	33	122	28	121	32	120	33	118		33	117	32	116	33	115	33	114	33	113	29	112	35	111	34	LOBBY		109	36	108	34	107	35	106	36	105	36	104	35	103	34	102	34	101	24

- STUDIO  
24 - 29 sqm
- 1 BEDROOM  
31 - 36 sqm
- 1 BEDROOM  
37 - 40 sqm
- 2 BEDROOM  
53 - 58 sqm
- 2 BEDROOM  
63 - 71 sqm
- 2 BEDROOM  
92 sqm
- 3 BEDROOM  
111 sqm

Jomtien Soi 5

THE RIVIERA  
**BEVERLY HILLS**  
RESIDENCES

Project Details

Land Area: 5 Rai  
Buildable Area: 32,696 Sqm  
Residential Area: 17,824 Sqm  
Storeys: 8  
Residence Buildings: 3  
Total Residences: 469  
Commercial Units: 4

Room Types:  
Studio, 1, 2 and 3 Bed  
Parking Spaces: 124  
Ownership: Freehold  
Construction Start: February 2026  
Construction Finish: June 2028



Lemon GROVE

Emerald BAY

Orange GROVE

Jomtien  
Soi 5

PUBLIC ROAD







Relax or Play...  
it's Your Time Now

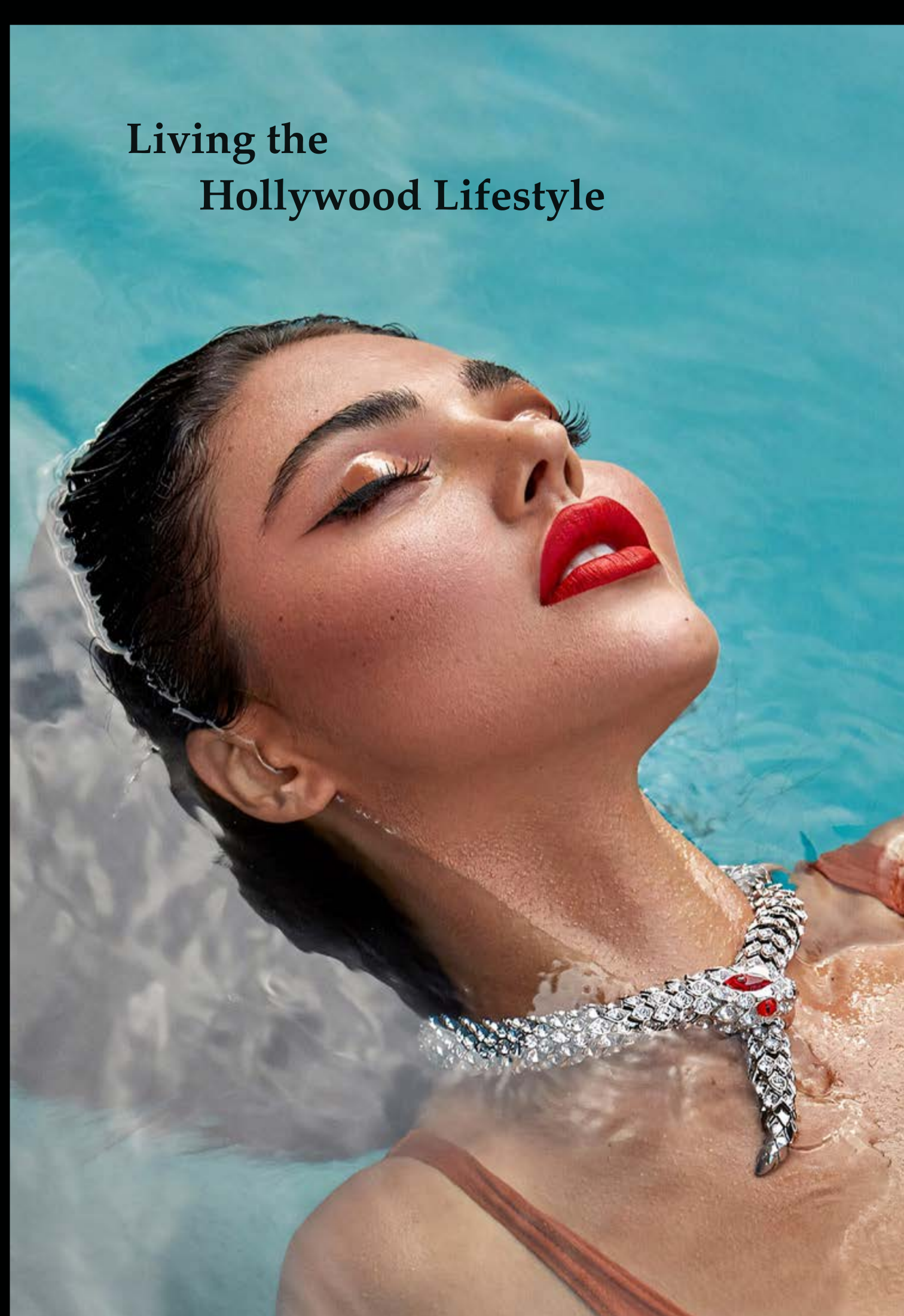


Chill Bar with Residence Lounge - 2<sup>nd</sup> Floor



Indoor, Outdoor Restaurant & Terrace - Ground Floor





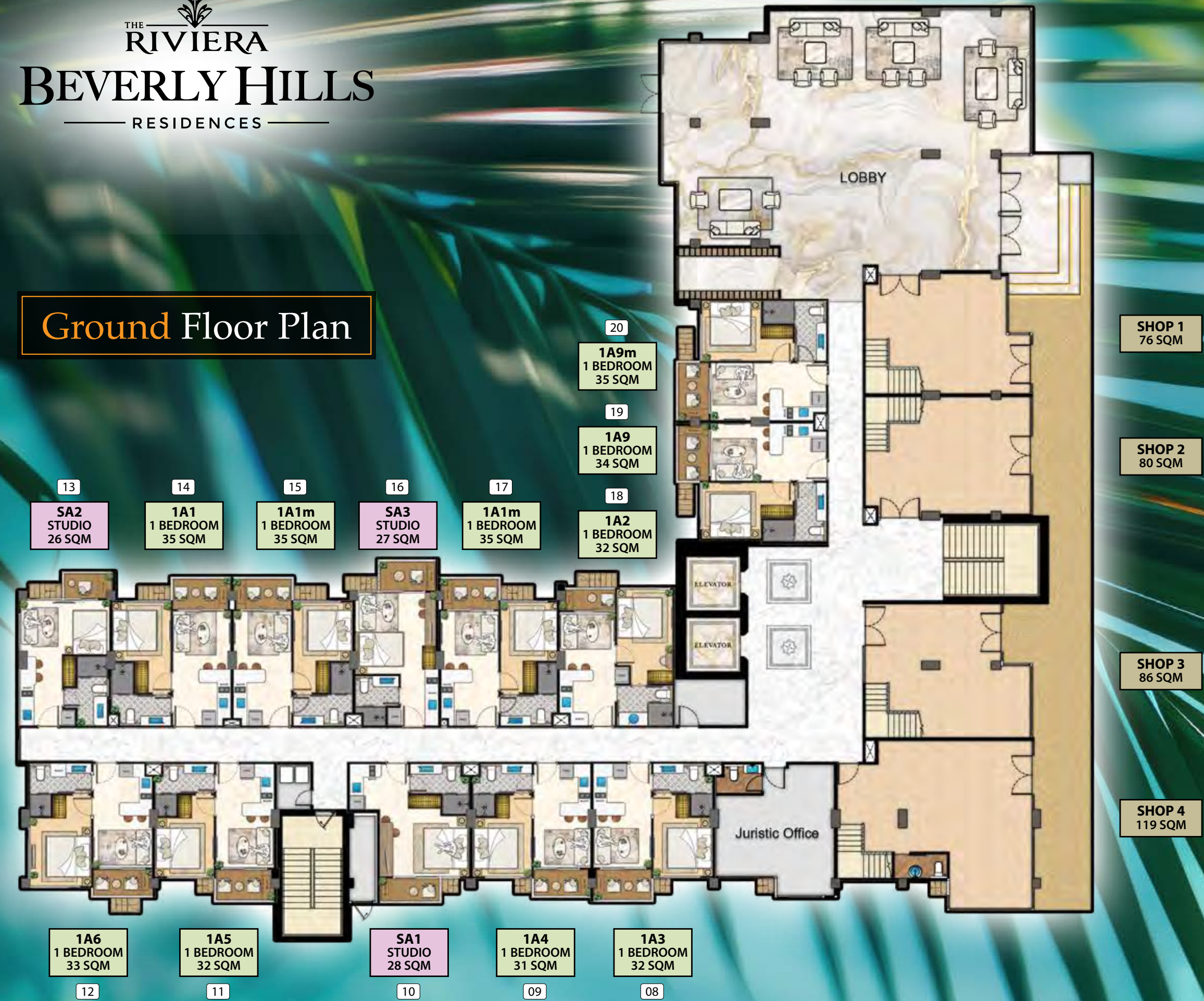


THE RIVIERA  
BEVERLY HILLS  
RESIDENCES

# Orange GROVE

Live The Hollywood Dream

Ground Floor Plan



2<sup>nd</sup> Floor Plan



THE RIVIERA  
BEVERLY HILLS  
RESIDENCES

3<sup>rd</sup> Floor Plan



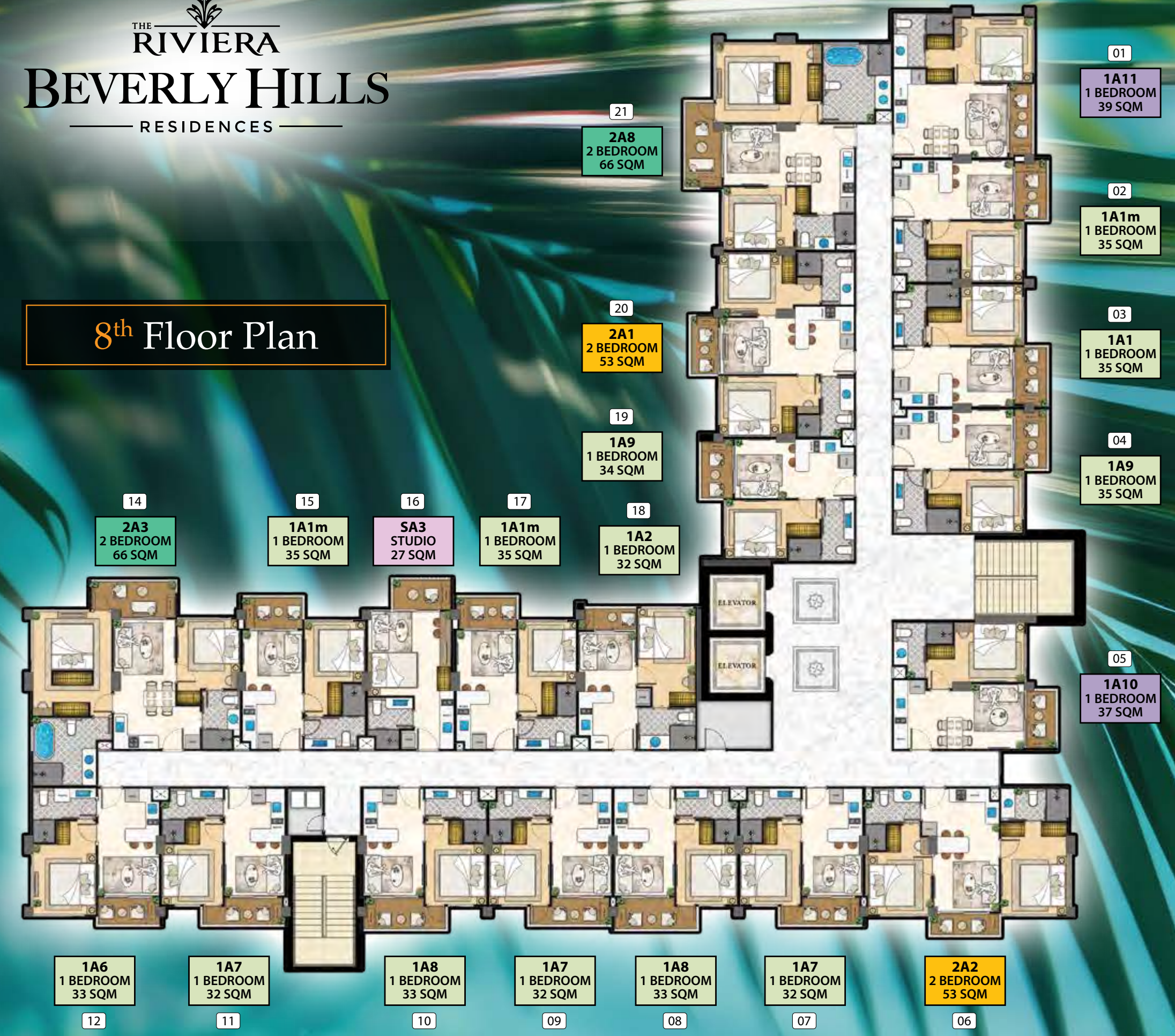
THE RIVIERA  
BEVERLY HILLS  
RESIDENCES

4<sup>th</sup> - 7<sup>th</sup> Floor Plan



THE RIVIERA  
BEVERLY HILLS  
RESIDENCES

8<sup>th</sup> Floor Plan



THE RIVIERA  
BEVERLY HILLS  
RESIDENCES

Roof Plan



**STUDIO RESIDENCE**  
Pool View



**SA2 26 sqm**  
Floors 1-7

22	1
21	2
20	3
19	4
18	5
17	
16	
15	
14	
13	
12	
11	
10	
9	
8	
7	
6	

**SA3 27 sqm**  
Floors 1-8

22	1
21	2
20	3
19	4
18	5
17	
16	
15	
14	
13	
12	
11	
10	
9	
8	
7	
6	

**STUDIO & 1 BEDROOM RESIDENCE**  
Pool View



**SA4 29 sqm**  
Floors 3-7

22	1
21	2
20	3
19	4
18	5
17	
16	
15	
14	
13	
12	
11	
10	
9	
8	
7	
6	

**1A2 32 sqm**  
Floors 1-8

22	1
21	2
20	3
19	4
18	5
17	
16	
15	
14	
13	
12	
11	
10	
9	
8	
7	
6	

**1 BEDROOM RESIDENCE**  
Pool View



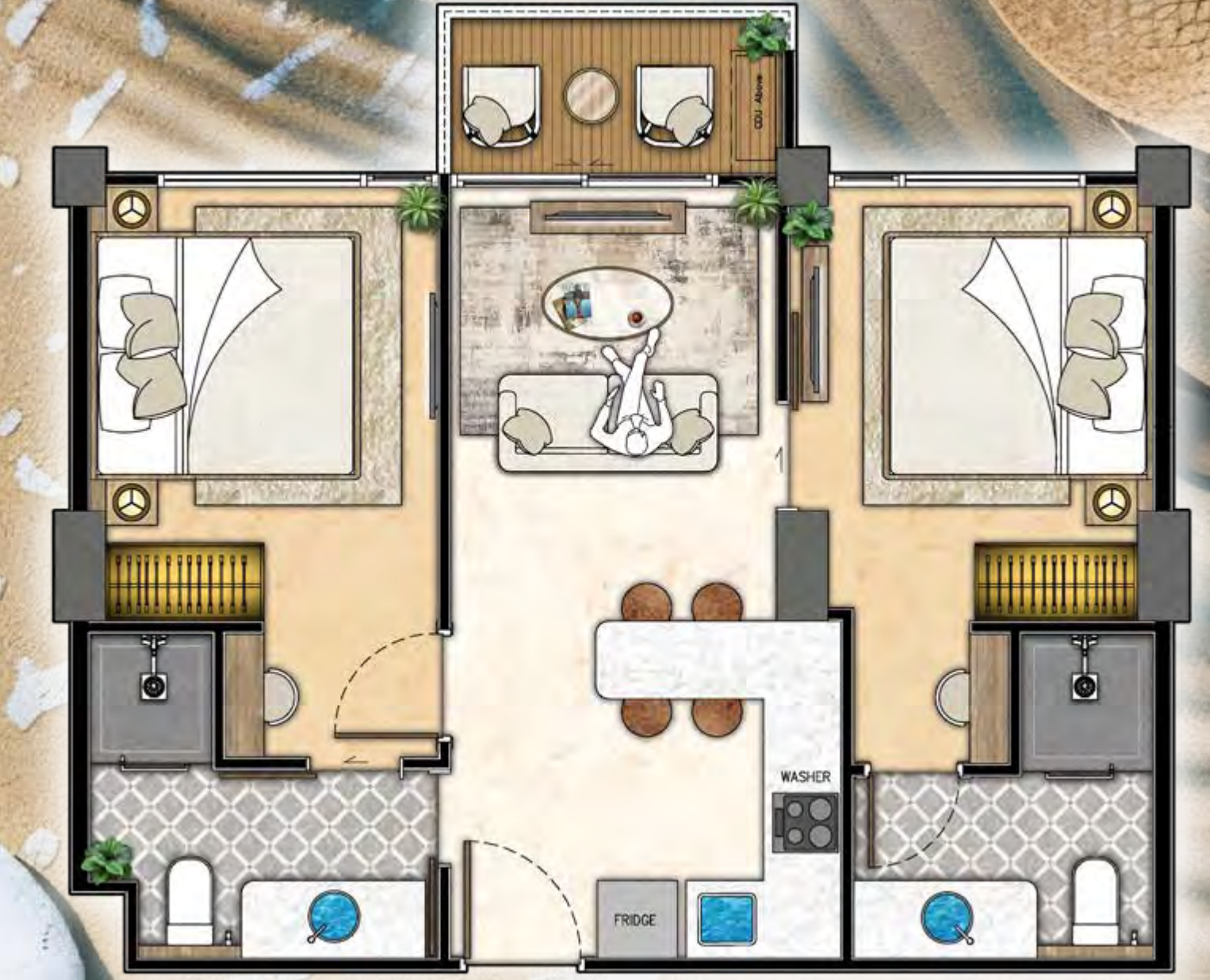
**1A9 34 sqm**  
Floors 1-8



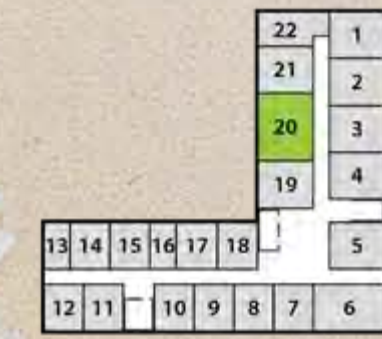
**1A1, 1A1m, 1A9m 35 sqm**  
Floors 1-8



**2 BEDROOM RESIDENCE**  
Pool View



**2A1 53 sqm**  
Floors 3-8





2 BEDROOM COMBINED RESIDENCE  
Pool View



2A5 62 sqm  
Floors 3-4

										20	1
										19	2
										18	3
										17	4
										16	5
										15	6
										14	7
										13	8
										12	9
										11	10
										10	11
										9	12
										8	13
										7	14
										6	15

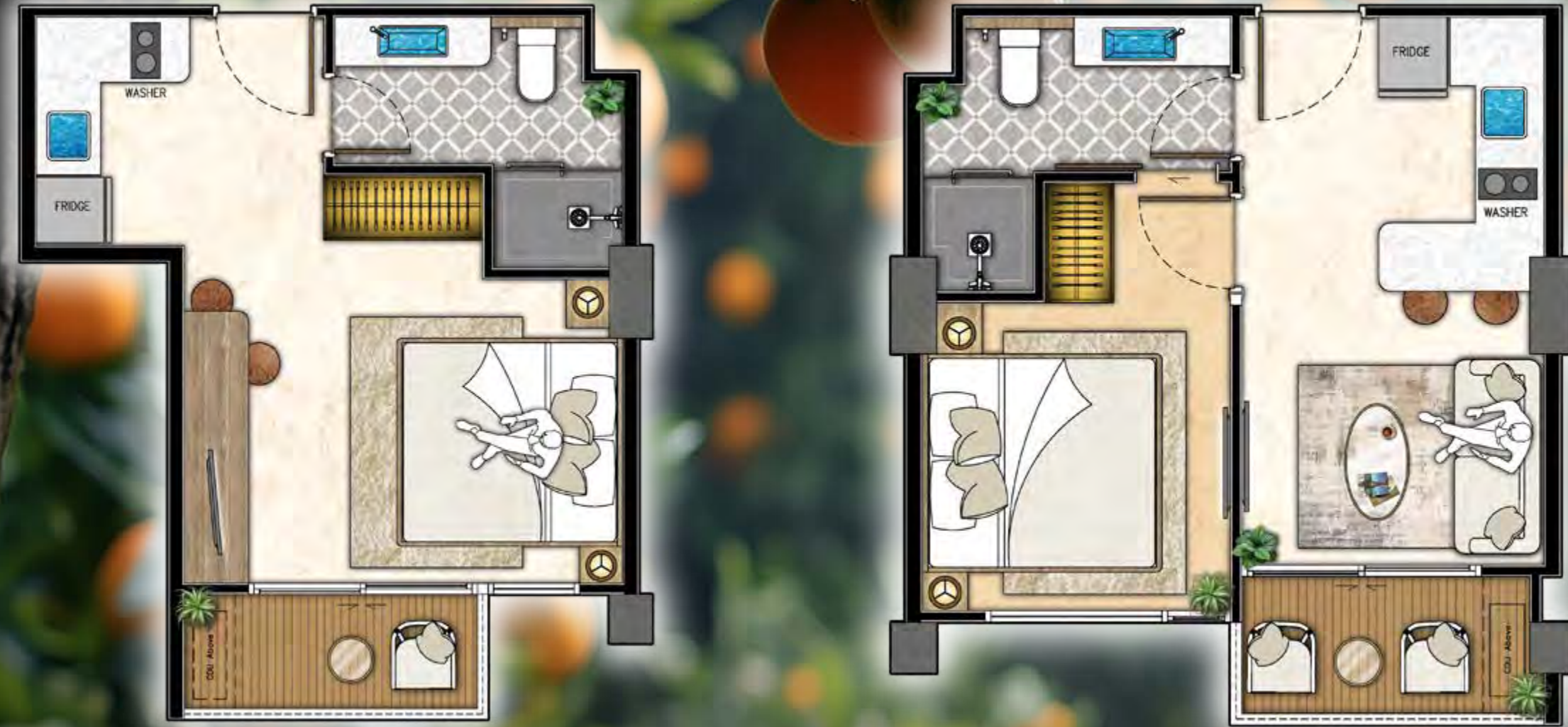
2 BEDROOM COMBINED RESIDENCE  
Pool View



2A4 69 sqm  
Floor 2

										20	1
										19	2
										18	3
										17	4
										16	5
										15	6
										14	7
										13	8
										12	9
										11	10
										10	11
										9	12
										8	13
										7	14
										6	15

**STUDIO & 1 BEDROOM RESIDENCE**  
Garden View



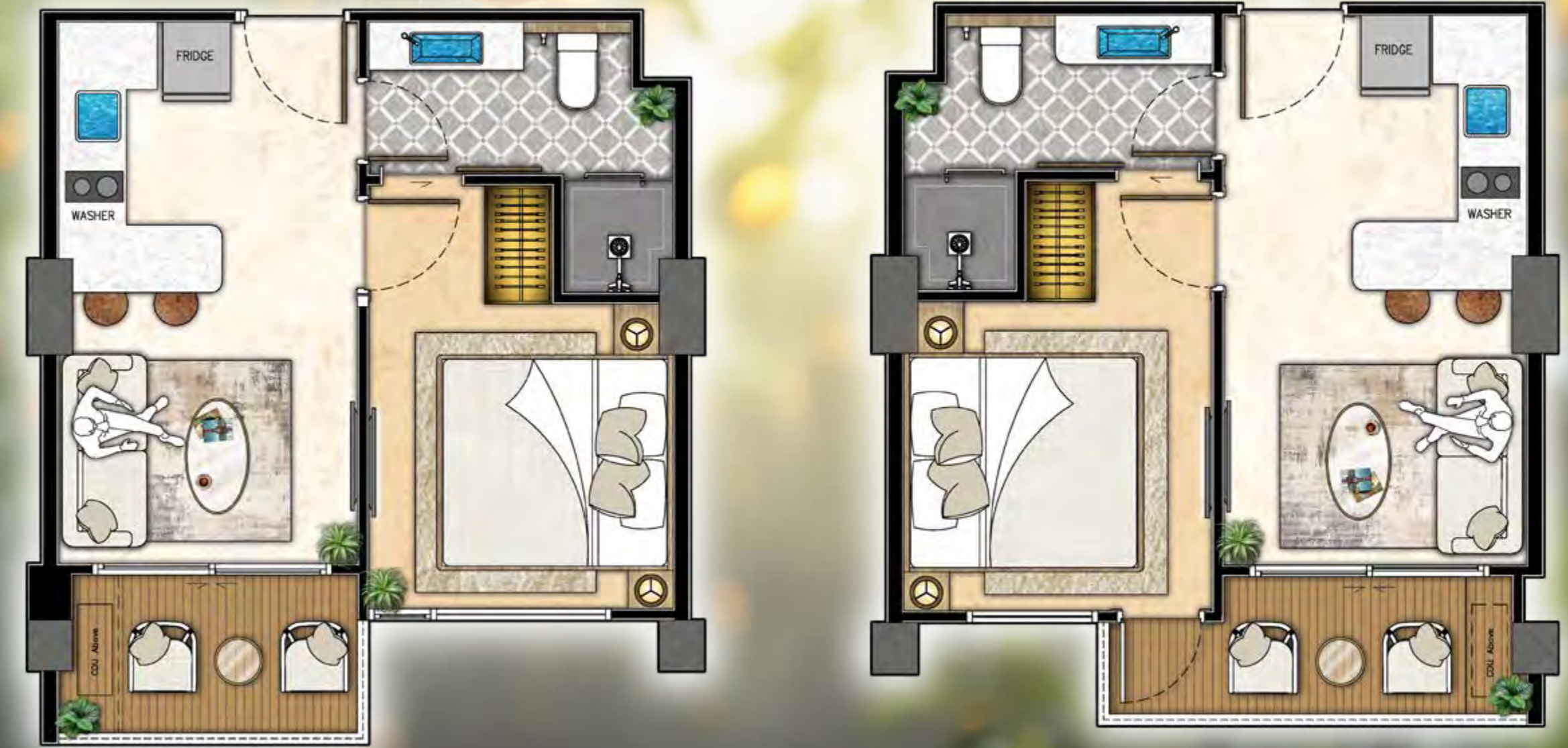
**SA1 28 sqm**  
Floor 1

22	1
21	2
20	3
19	4
18	5
17	
16	
15	
14	
13	
12	
11	
10	
9	
8	
7	
6	

**1A4 31 sqm**  
Floors 1, 3

22	1
21	2
20	3
19	4
18	5
17	
16	
15	
14	
13	
12	
11	
10	
9	
8	
7	
6	

**1 BEDROOM RESIDENCE**  
Garden View



**1A3 32 sqm**  
Floors 1, 3

22	1
21	2
20	3
19	4
18	5
17	
16	
15	
14	
13	
12	
11	
10	
9	
8	
7	
6	

**1A7 32sqm**  
Floors 2, 4-8

22	1
21	2
20	3
19	4
18	5
17	
16	
15	
14	
13	
12	
11	
10	
9	
8	
7	
6	

**STUDIO & 1 BEDROOM RESIDENCE**  
Garden View



**1A10 37 sqm**  
Floors 3-8

22	1
21	2
20	3
19	4
18	5
17	
16	
15	
14	
13	
12	
11	
10	
9	
8	
7	
6	



**1A8 33 sqm**  
Floors 2, 4-8

22	1
21	2
20	3
19	4
18	5
17	
16	
15	
14	
13	
12	
11	
10	
9	
8	
7	
6	

**1 & 2 BEDROOM RESIDENCE**  
Garden View



**1A11 39 sqm**  
Floors 3-8

22	1
21	2
20	3
19	4
18	5
17	
16	
15	
14	
13	
12	
11	
10	
9	
8	
7	
6	



**2A2 53 sqm**  
Floors 3-8

22	1
21	2
20	3
19	4
18	5
17	
16	
15	
14	
13	
12	
11	
10	
9	
8	
7	
6	





THE RIVIERA  
BEVERLY HILLS  
RESIDENCES

# Emerald BAY

Live The Hollywood Dream

THE RIVIERA  
BEVERLY HILLS  
RESIDENCES

Ground Floor Plan



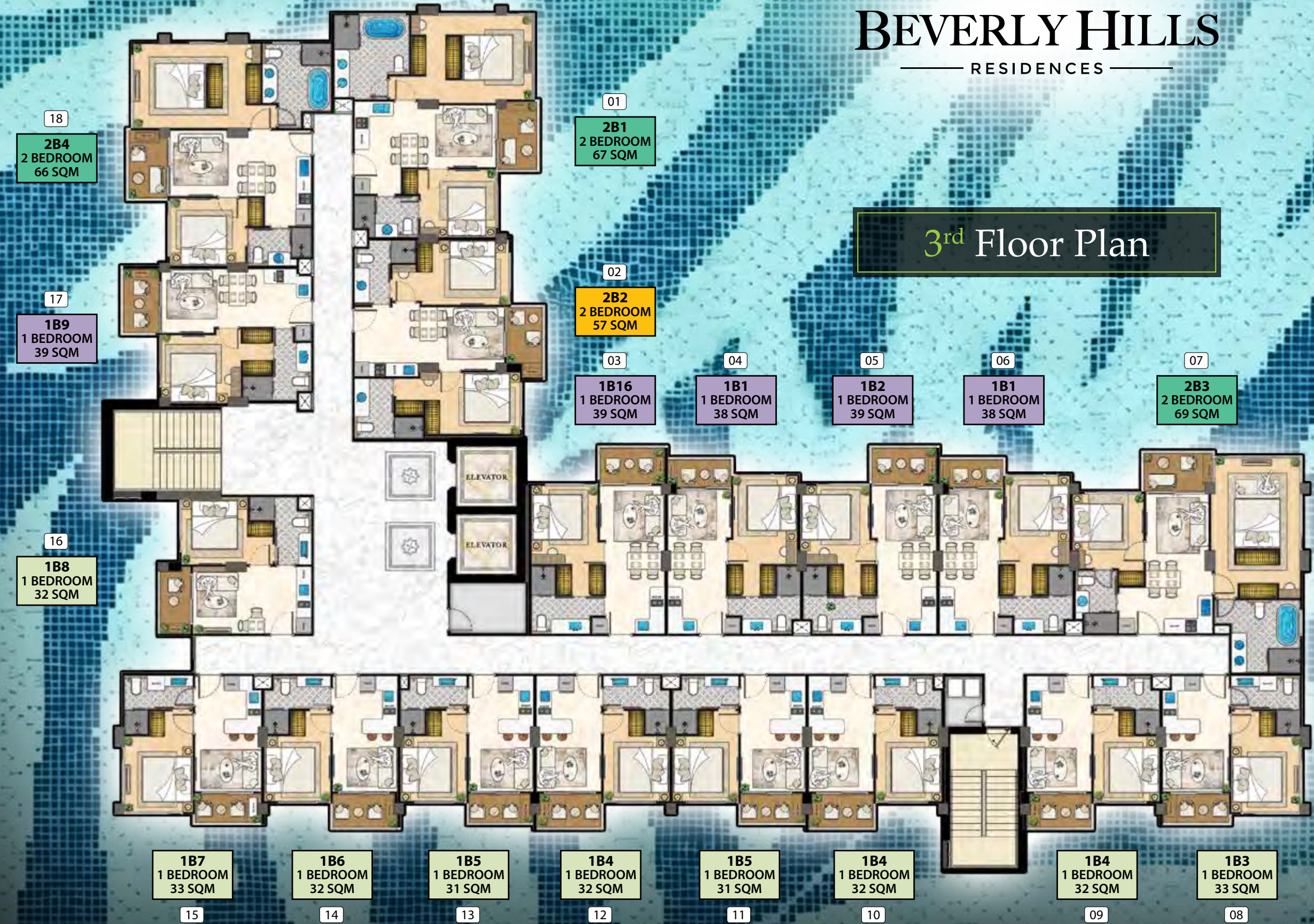
THE RIVIERA  
BEVERLY HILLS  
RESIDENCES

2<sup>nd</sup> Floor Plan



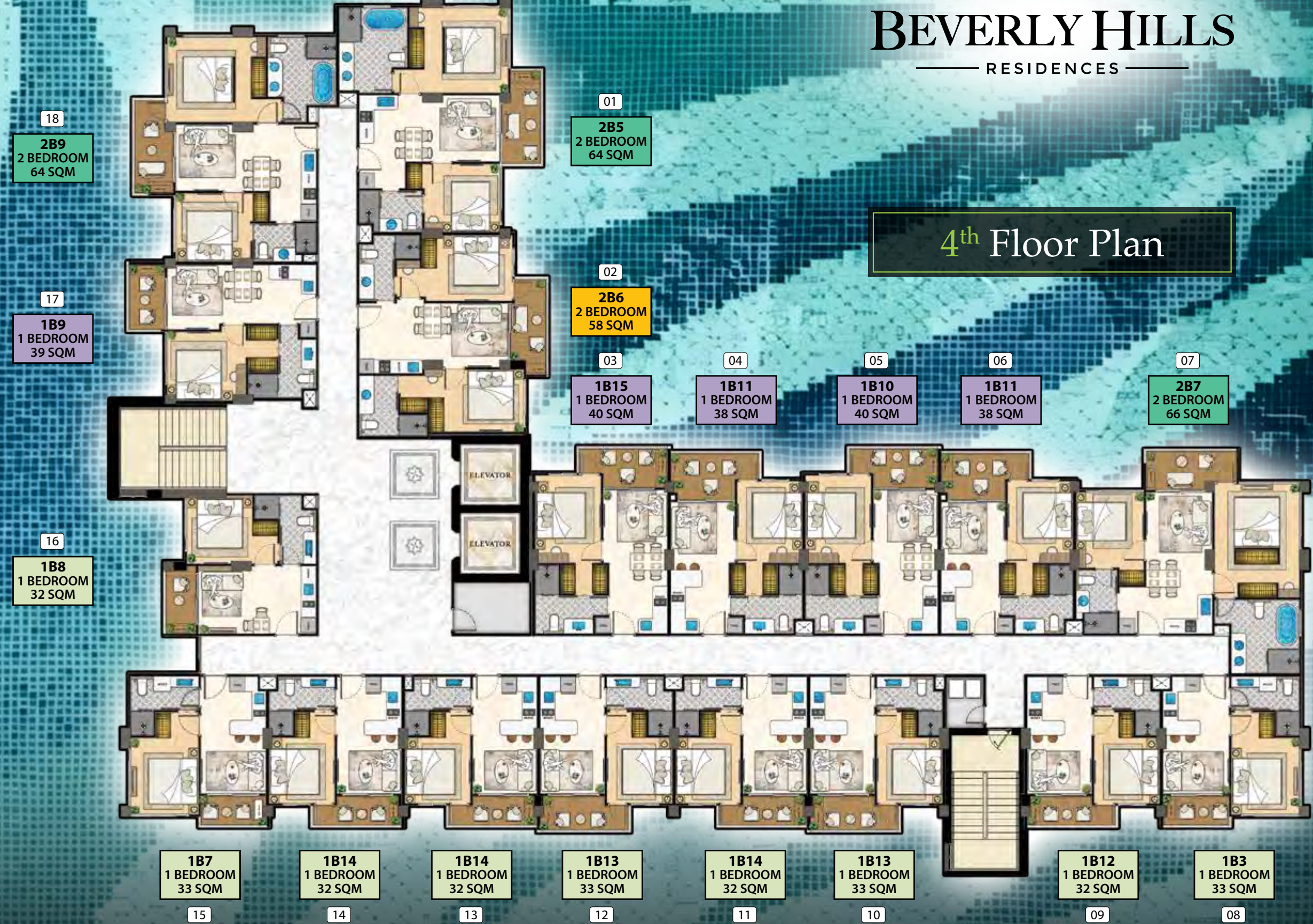
THE RIVIERA  
BEVERLY HILLS  
RESIDENCES

3<sup>rd</sup> Floor Plan



THE RIVIERA  
BEVERLY HILLS  
RESIDENCES

4<sup>th</sup> Floor Plan



THE RIVIERA  
BEVERLY HILLS  
RESIDENCES

5<sup>th</sup> & 7<sup>th</sup> Floor Plan



THE RIVIERA  
BEVERLY HILLS  
RESIDENCES

6<sup>th</sup> & 8<sup>th</sup> Floor Plan





PATTAYA'S NO.1  
MULTI-AWARD WINNING  
DEVELOPER



13 Times  
Thailand Property  
Awards Winner



57 Times  
Asia Pacific Property  
Awards Winner



THE RIVIERA  
**BEVERLY HILLS**  
RESIDENCES

Roof Plan

Emerald BAY

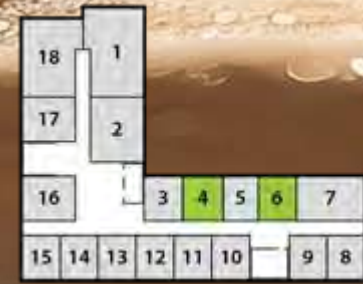
**1 BEDROOM RESIDENCE**  
Pool View



**1B8 32 sqm**  
Floors 1-8



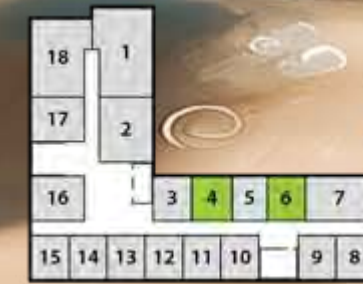
**1B11 38 sqm**  
Floors 2, 4, 6, 8



**1 BEDROOM RESIDENCE**  
Pool View



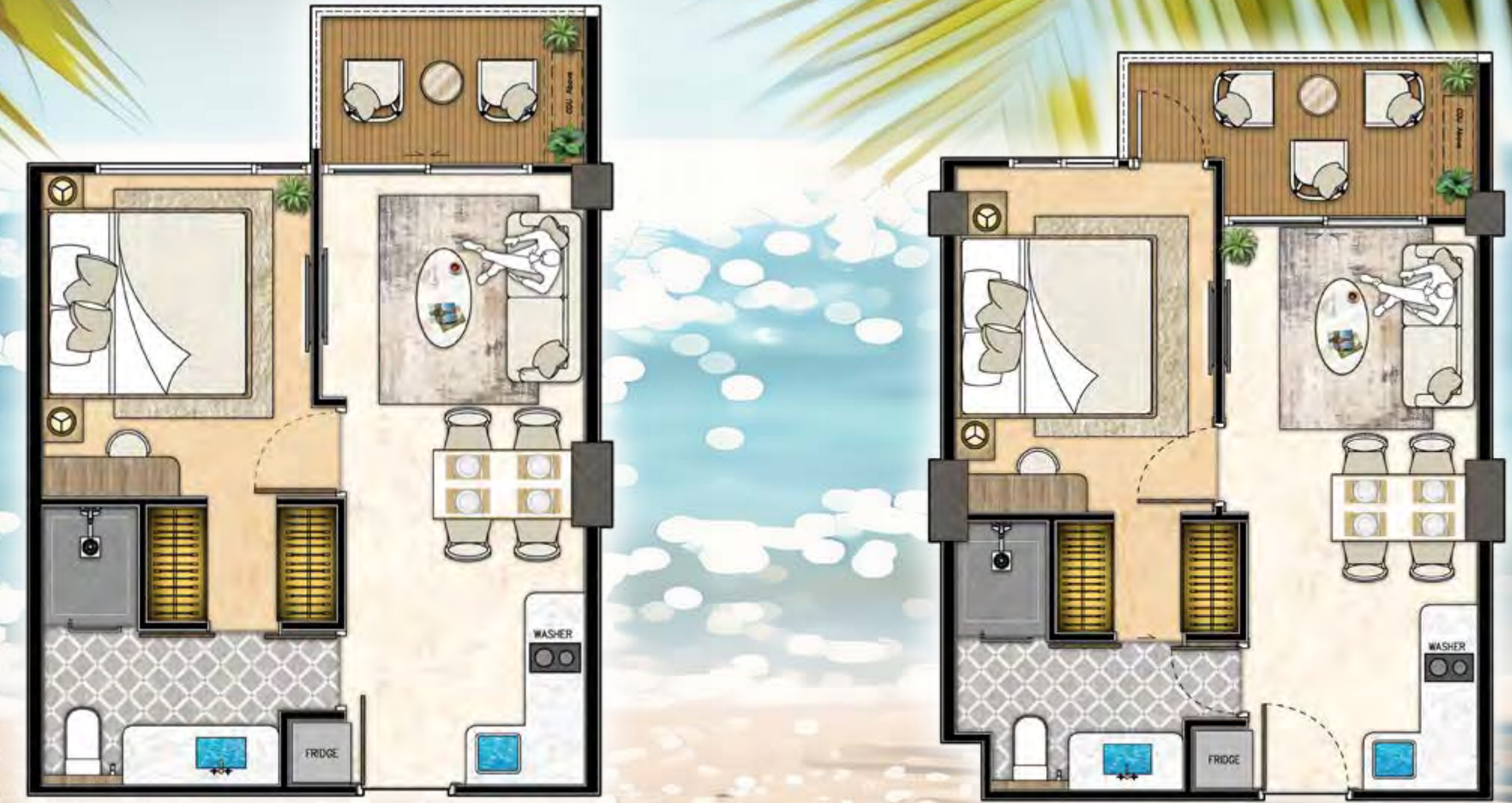
**1B1 38 sqm**  
Floors 1, 3, 5, 7



**1B9 39 sqm**  
Floors 1-4



**1 BEDROOM RESIDENCE**  
Pool View



1B2, 1B16, 1B17 **39 sqm**  
Floors 1, 3, 5, 7, 8



1B10, 1B15 **40 sqm**  
Floors 2, 4, 6, 8



**2 BEDROOM RESIDENCE**  
Pool View



2B2 **57 sqm**  
Floors 1, 3



2B6 **58 sqm**  
Floors 2, 4



2 BEDROOM RESIDENCE  
Pool View



2B5 64 sqm  
Floors 2, 4



2 BEDROOM RESIDENCE  
Pool View



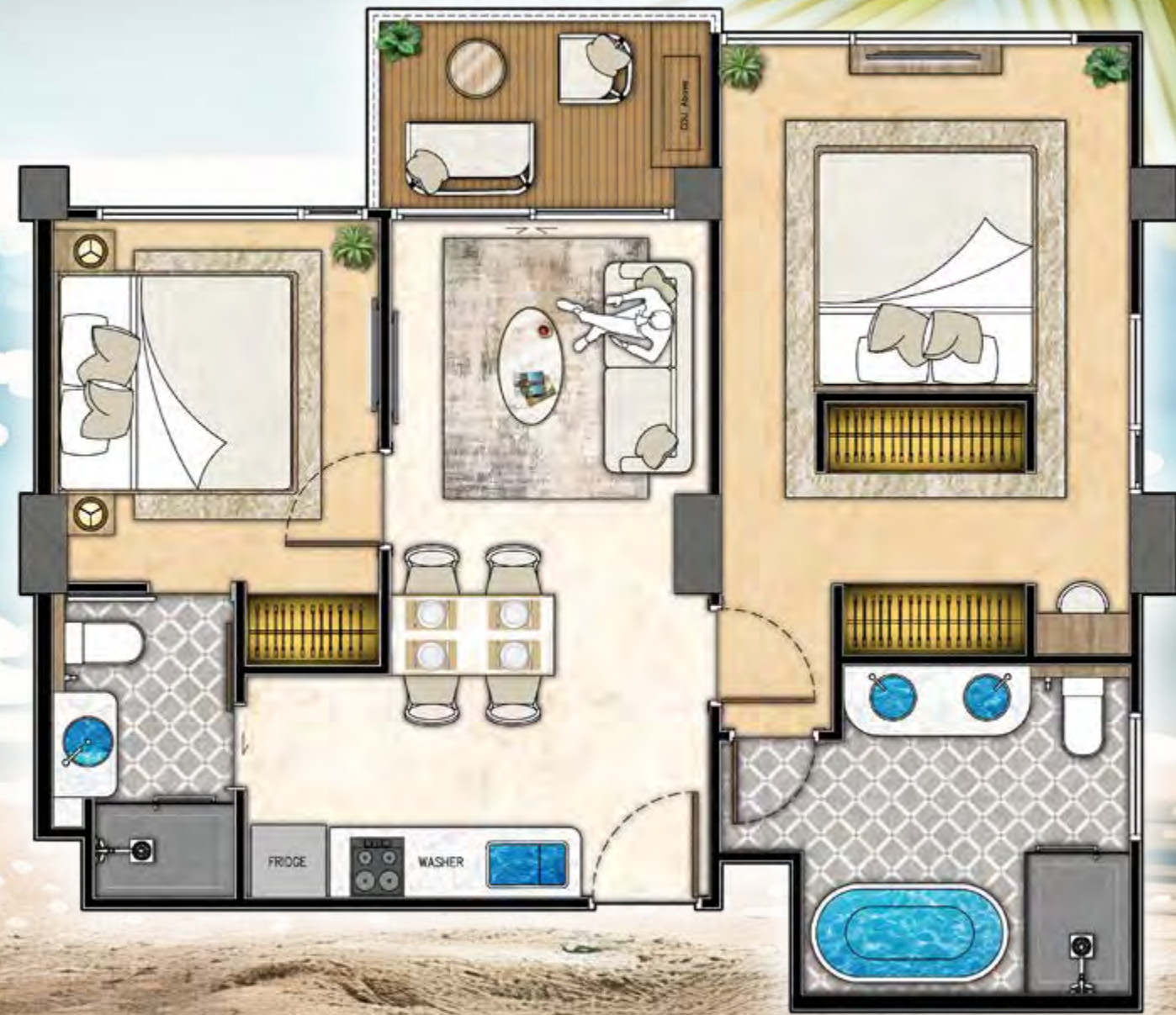
2B9 64 sqm  
Floors 2, 4



2B7 66 sqm  
Floors 2, 4, 6, 8



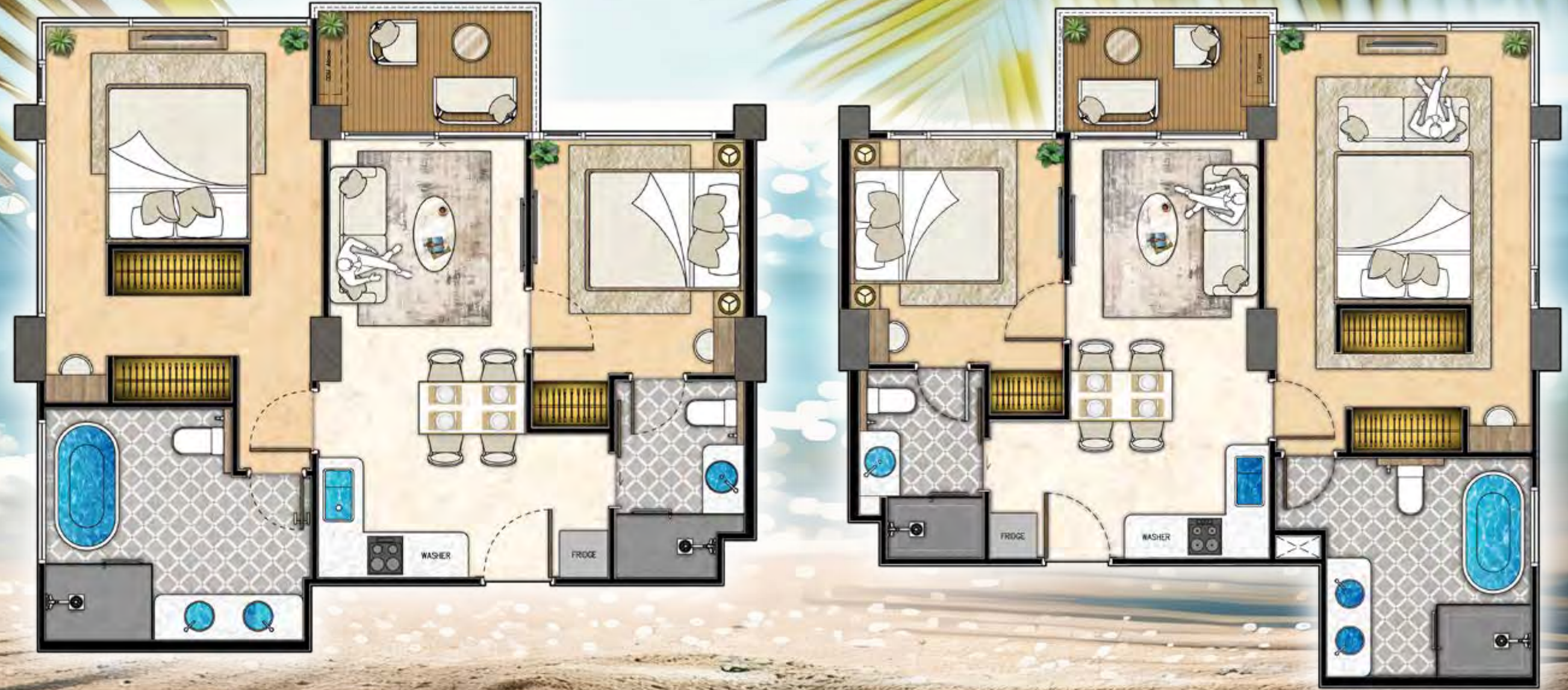
**2 BEDROOM RESIDENCE**  
Pool View



**2B4 66 sqm**  
Floors 1, 3



**2 BEDROOM RESIDENCE**  
Pool View



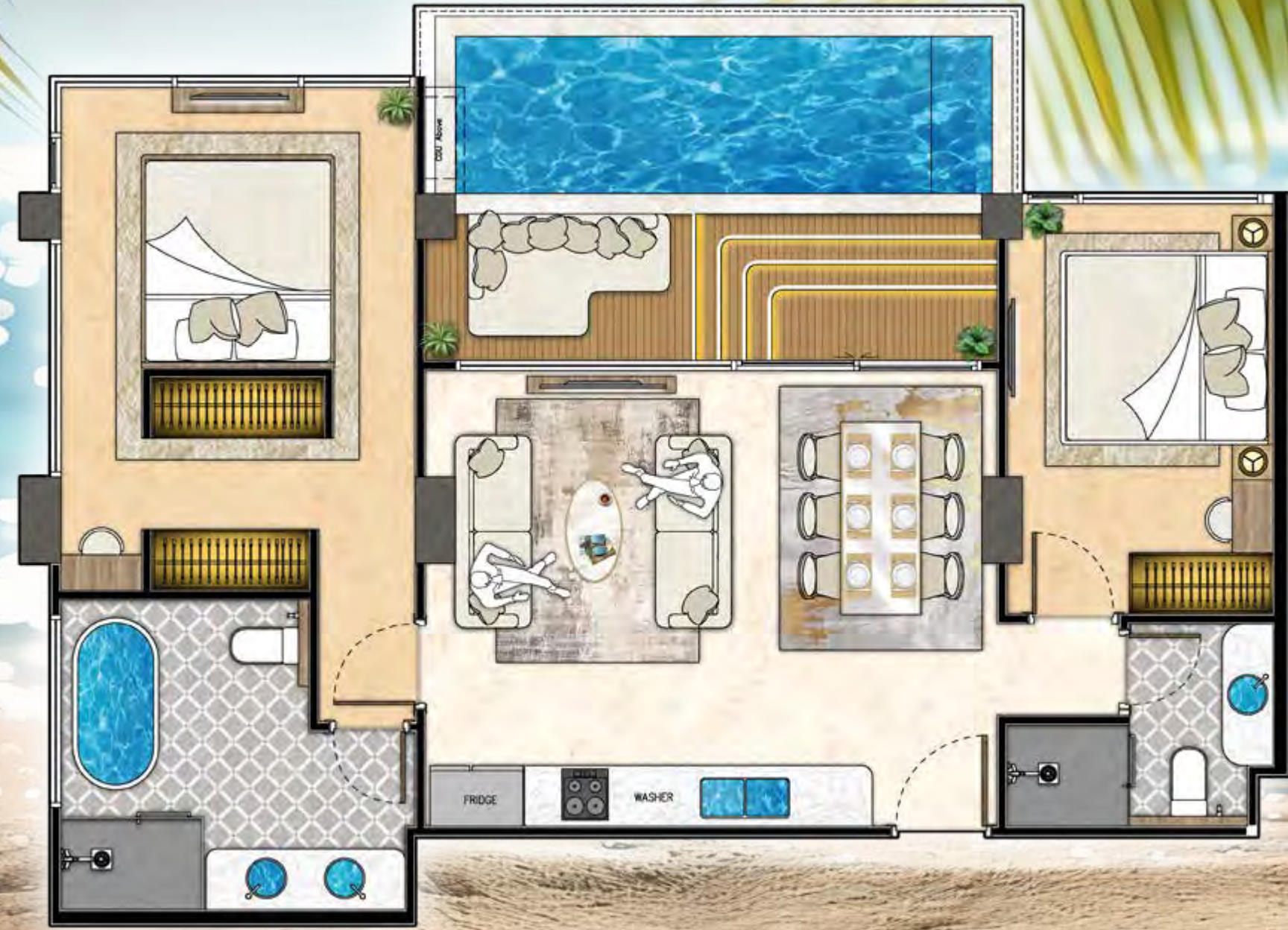
**2B1 67 sqm**  
Floors 1, 3



**2B3 69 sqm**  
Floors 1, 3, 5, 7



**2 BEDROOM RESIDENCE**  
Pool View



**2B8 92 sqm**  
Floors 5-8



**3 BEDROOM RESIDENCE**  
Pool View



**3B1 111 sqm**  
Floors 5-8

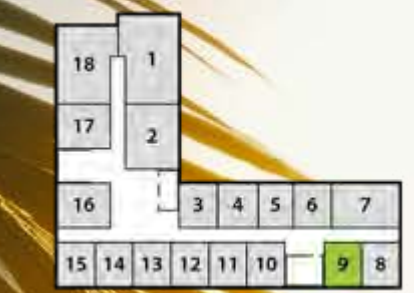




**STUDEIO & 1 BEDROOM RESIDENCE**  
Garden View



**SB1 28 sqm**  
Floor 1



**1B5 31 sqm**  
Floors 1, 3, 5, 7



**RIVIERA GROUP**  
PATTAYA'S NO.1  
MULTI-AWARD WINNING  
DEVELOPER



**13 Times**  
Thailand Property  
Awards Winner

**ASIA PACIFIC  
PROPERTY  
AWARDS  
WINNER**

**57 Times**  
Asia Pacific Property  
Awards Winner

**Emerald BAY**



## 1 BEDROOM RESIDENCE Garden View

**1B3, 1B7 33 sqm**  
Floors 1-8

18	1
17	2
16	3 4 5 6 7
15	14 13 12 11 10 9 8

**1B4, 1B6 32 sqm**  
Floors 1, 3, 5, 7

18	1
17	2
16	3 4 5 6 7
15	14 13 12 11 10 9 8

Emerald BAY

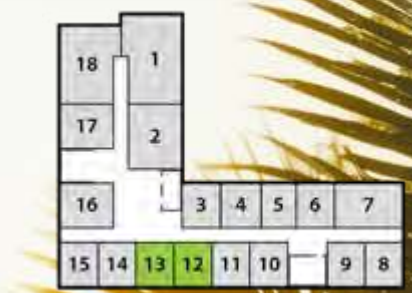


Living the  
Hollywood  
Lifestyle



2 BEDROOM COMBINED RESIDENCE  
Garden View

2B11 63 sqm  
Floor 1



Emerald BAY

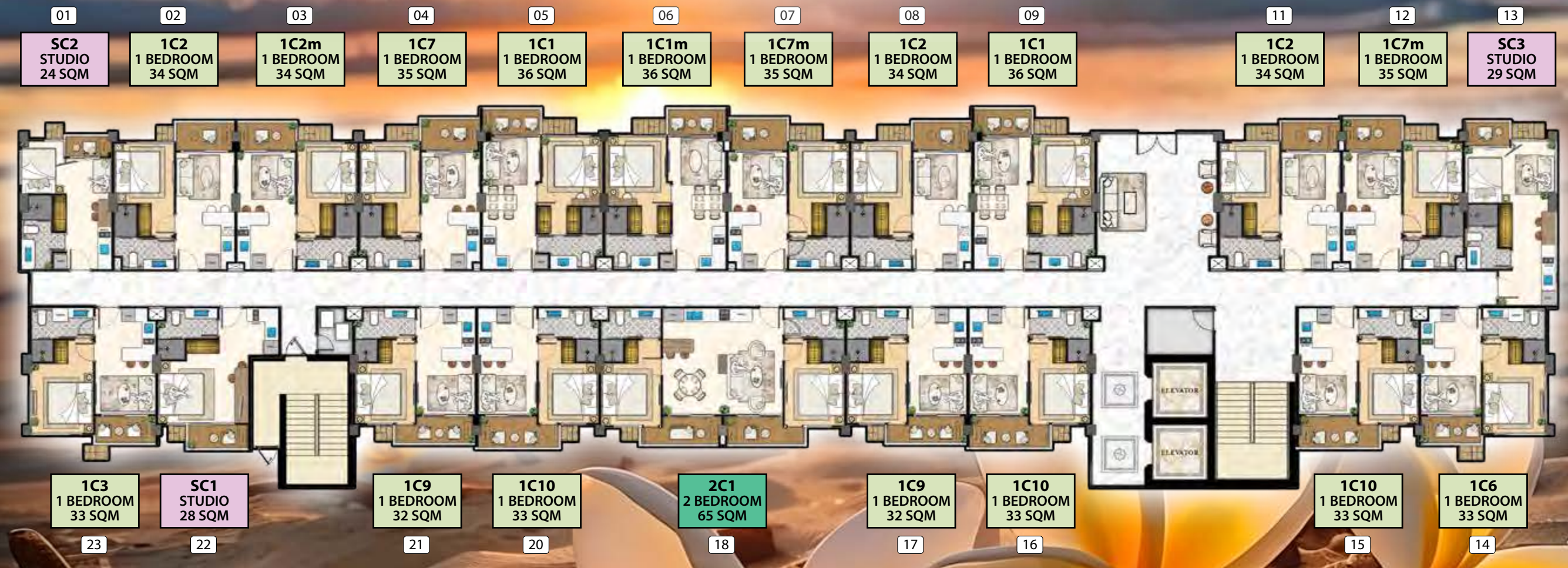


THE RIVIERA  
BEVERLY HILLS  
RESIDENCES

# Lemon GROVE

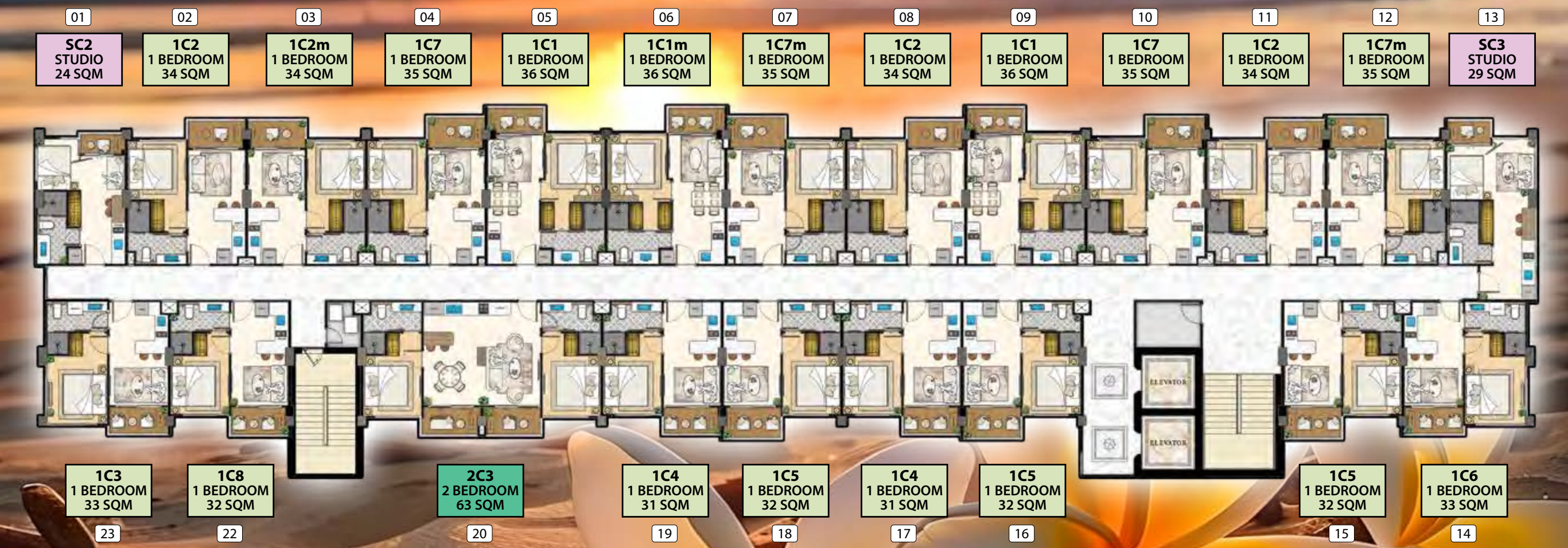
Live The Hollywood Dream

THE RIVIERA  
**BEVERLY HILLS**  
 RESIDENCES



Ground Floor Plan

THE RIVIERA  
**BEVERLY HILLS**  
 RESIDENCES

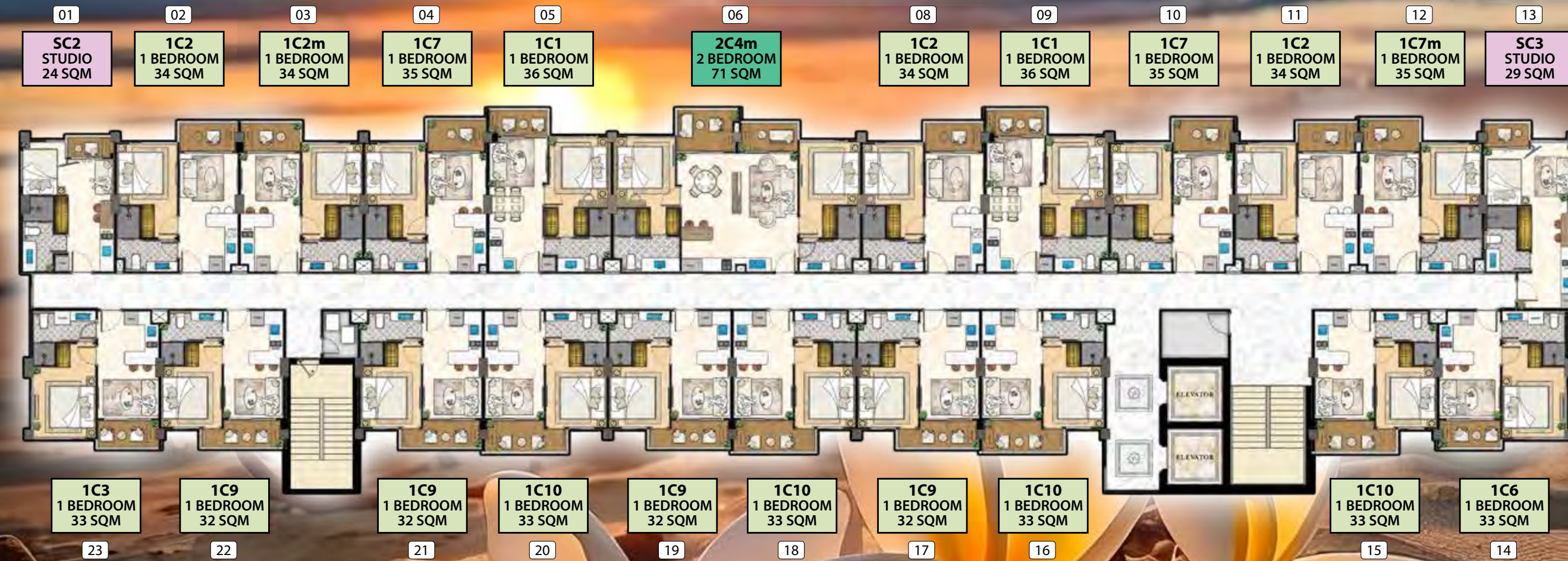


2<sup>nd</sup> & 4<sup>th</sup> Floor Plan

Lemon GROVE

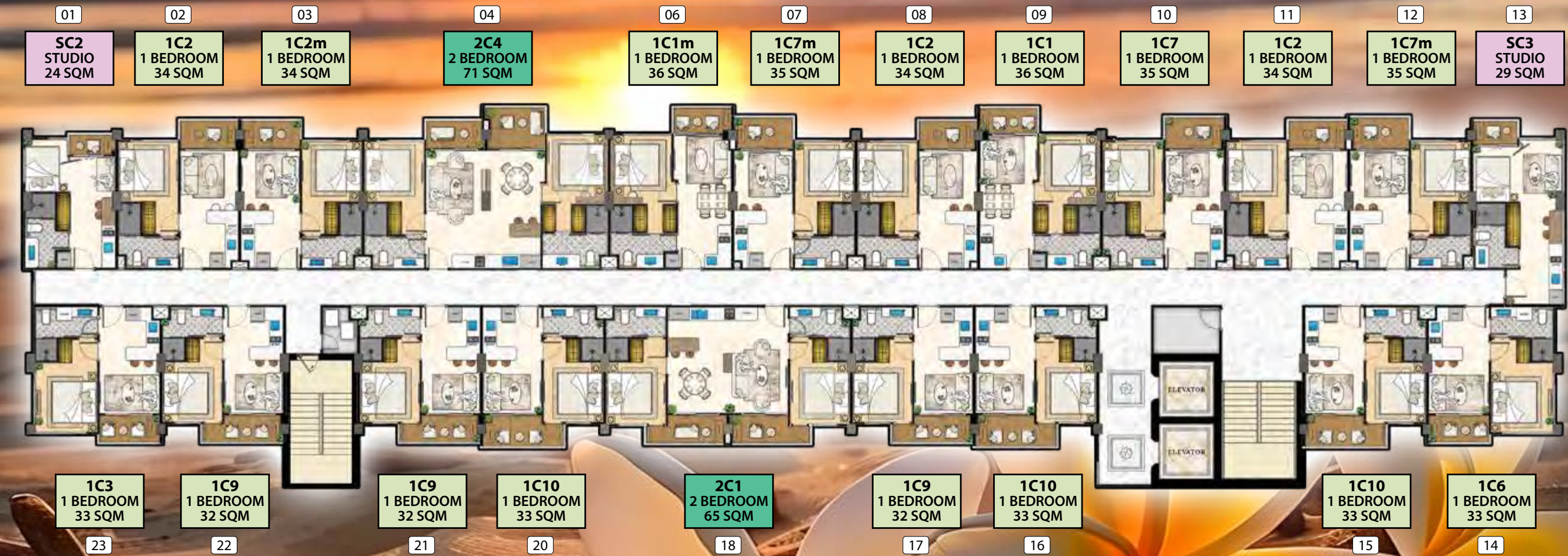
Lemon GROVE

THE RIVIERA  
**BEVERLY HILLS**  
 RESIDENCES



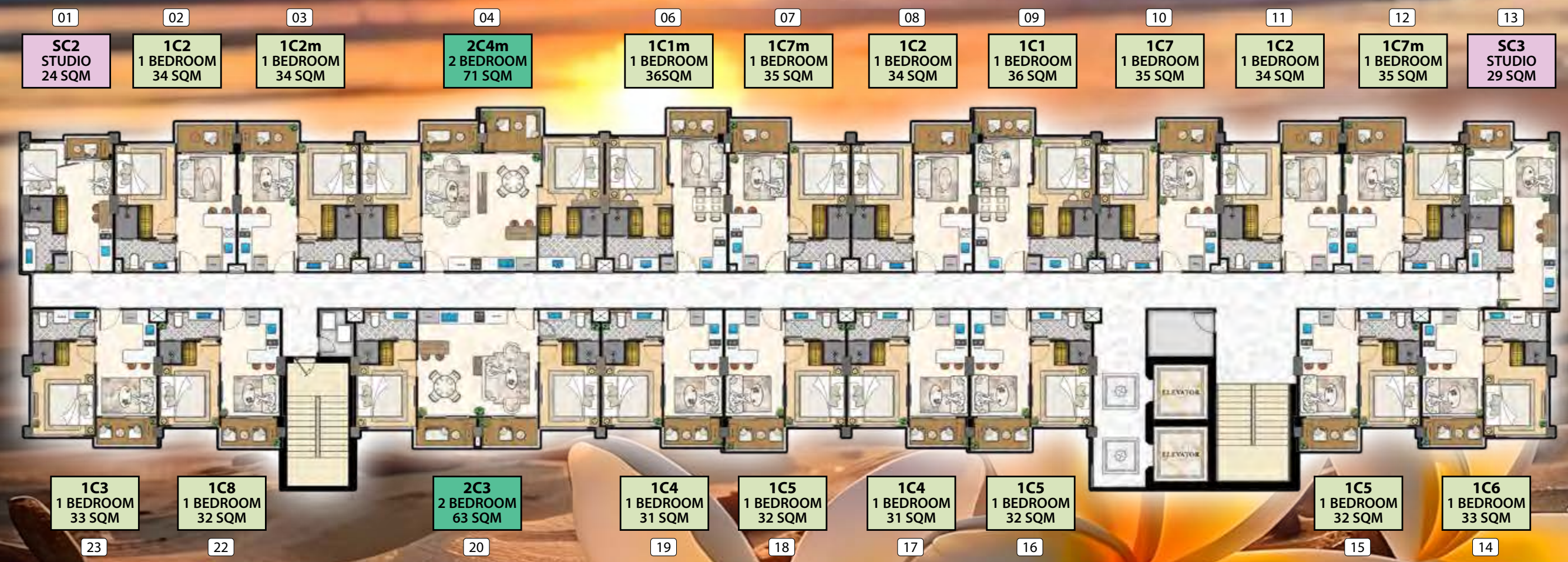
3<sup>rd</sup> Floor Plan

THE RIVIERA  
**BEVERLY HILLS**  
 RESIDENCES



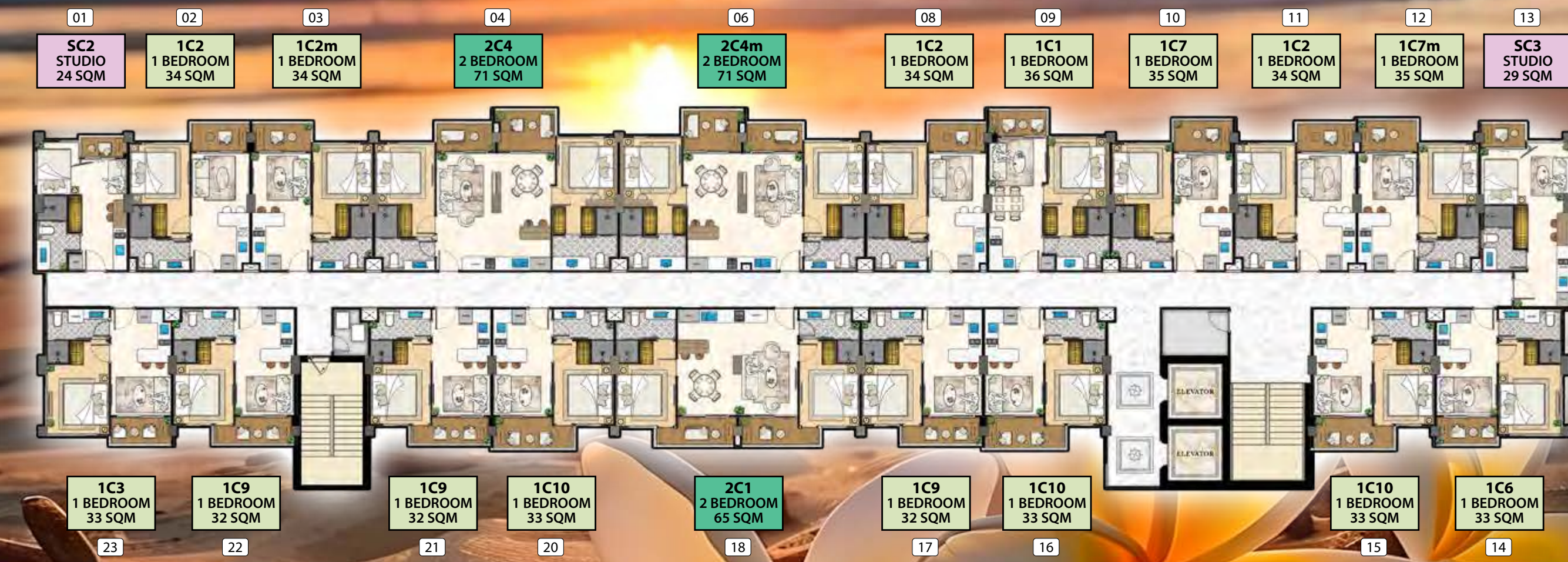
5<sup>th</sup> Floor Plan

THE RIVIERA  
**BEVERLY HILLS**  
 RESIDENCES



6<sup>th</sup> Floor Plan

THE RIVIERA  
**BEVERLY HILLS**  
 RESIDENCES

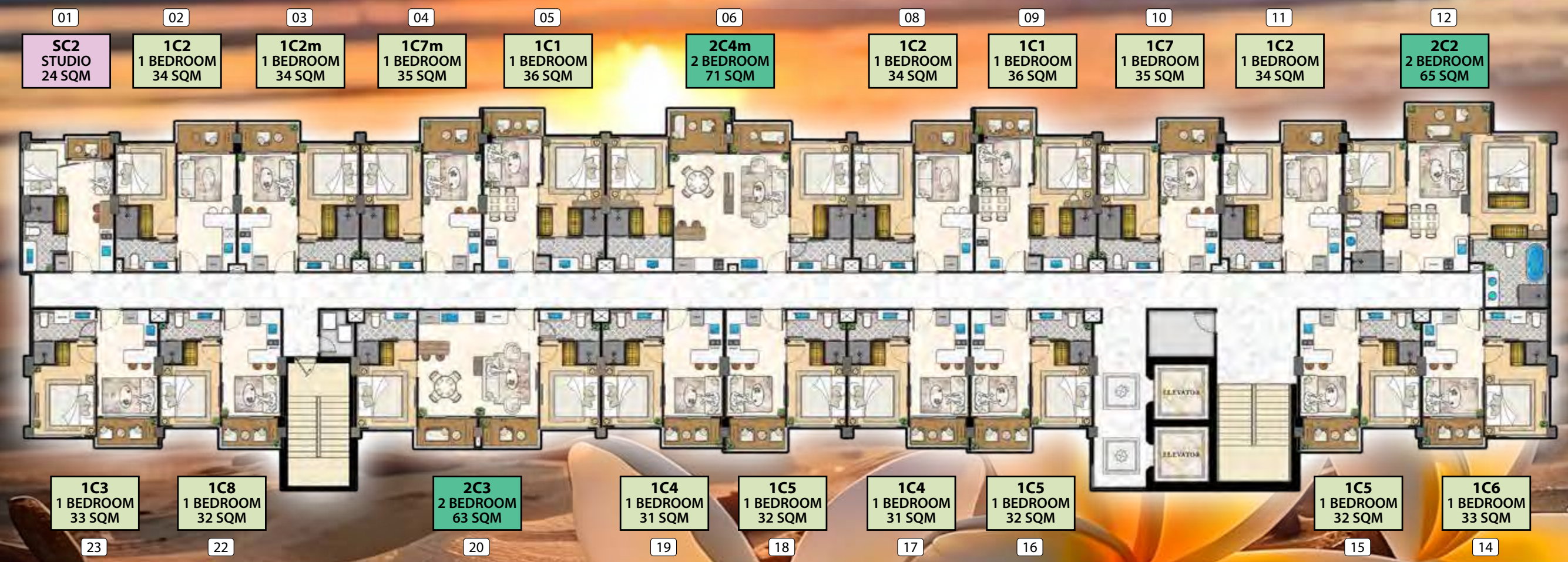


7<sup>th</sup> Floor Plan

Lemon GROVE

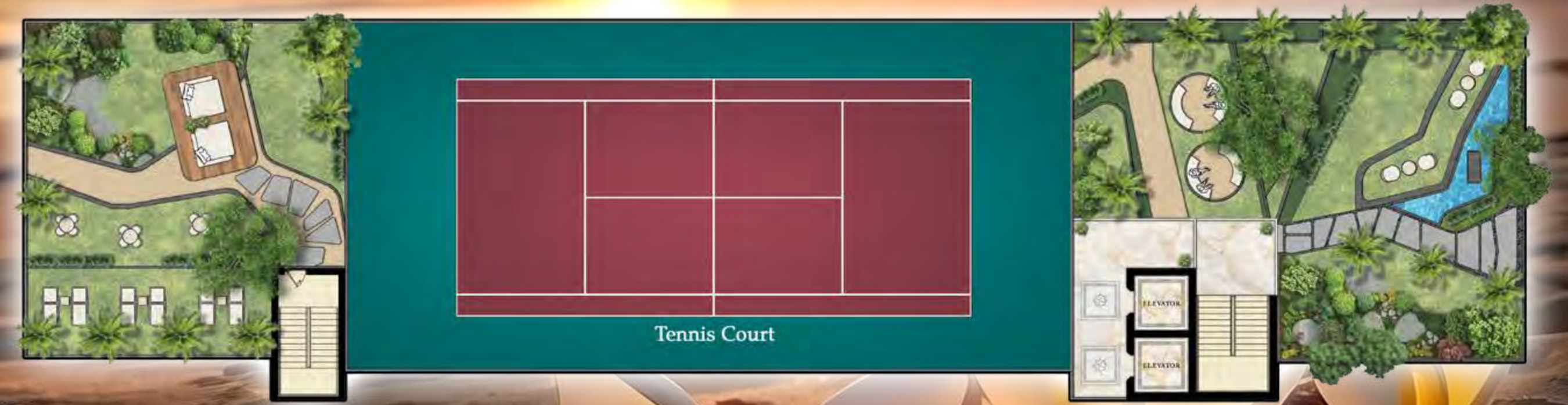
Lemon GROVE

THE RIVIERA  
**BEVERLY HILLS**  
 RESIDENCES



8<sup>th</sup> Floor Plan

THE RIVIERA  
**BEVERLY HILLS**  
 RESIDENCES



Roof Plan

Lemon GROVE

Lemon GROVE

**STUDIO RESIDENCE**  
Pool View



**SC2 24 sqm**  
Floors 1-8

1	2	3	4	5	6	7	8	9	10	11	12	13
23	22	21	20	19	18	17	16	15	14			

**SC3 29 sqm**  
Floors 1-7

1	2	3	4	5	6	7	8	9	10	11	12	13
23	22	21	20	19	18	17	16	15	14			

**1 BEDROOM RESIDENCE**  
Pool View



**1C2, 1C2m 34 sqm**  
Floors 1-8

1	2	3	4	5	6	7	8	9	10	11	12	13
23	22	21	20	19	18	17	16	15	14			

**1C7, 1C7m 35 sqm**  
Floors 1-8

1	2	3	4	5	6	7	8	9	10	11	12	13
23	22	21	20	19	18	17	16	15	14			



**1 & 2 BEDROOM RESIDENCE**  
Pool View

**1C1, 1C1m 36 sqm**  
Floors 1-8

1	2	3	4	5	6	7	8	9	10	11	12	13
23	22	21	20	19	18	17	16	15	14			

**2C2 65 sqm**  
Floor 8

1	2	3	4	5	6	7	8	9	10	11	12
23	22	21	20	19	18	17	16	15	14		

**Lemon GROVE**

**2 BEDROOM COMBINED RESIDENCE**  
Pool View



**2C5 69 sqm**  
Floor 6

1	2	3	4	5	6	7	8	9	10	11	12	13
23	22	21	20	19	18	17	16		15	14		

Lemon GROVE

**2 BEDROOM COMBINED RESIDENCE**  
Pool View



**2C4, 2C4m 71 sqm**  
Floors 3, 5, 6, 8

1	2	3	4	5	6	7	8	9	10	11	12	13
23	22	21	20	19	18	17	16		15	14		

Lemon GROVE

**STUDIO & 1 BEDROOM RESIDENCE**  
Garden View



**SC1 28 sqm**  
Floor 1

1	2	3	4	5	6	7	8	9	10	11	12	13
23	22	21	20	19	18	17	16		15	14		



**1C4 31 sqm**  
Floors 2, 4, 6, 8

1	2	3	4	5	6	7	8	9	10	11	12	13
23	22	21	20	19	18	17	16		15	14		

**1 BEDROOM RESIDENCE**  
Garden View



**1C8, 1C5 32 sqm**  
Floors 2, 4, 6, 8

1	2	3	4	5	6	7	8	9	10	11	12	13
23	22	21	20	19	18	17	16		15	14		



**1C9 32 sqm**  
Floor 1, 3, 5, 7

1	2	3	4	5	6	7	8	9	10	11	12	13
23	22	21	20	19	18	17	16		15	14		



**1 BEDROOM RESIDENCE**  
Garden View

**1C3, 1C6 33 sqm**  
Floors 1-8

1	2	3	4	5	6	7	8	9	10	11	12	13
23	22	21	20	19	18	17	16	15	14			

**1C10 33 sqm**  
Floor 1, 3, 5, 7

1	2	3	4	5	6	7	8	9	10	11	12	13
23	22	21	20	19	18	17	16	15	14			

**Lemon GROVE**

**2 BEDROOM** COMBINED RESIDENCE  
Garden View



**2C3 63 sqm**  
Floors 2, 4, 6, 8

1	2	3	4	5	6	7	8	9	10	11	12	13
23	22	21	20	19	18	17	16	15	14			

**2 BEDROOM** COMBINED RESIDENCE  
Garden View



**2C1 65 sqm**  
Floors 1, 5, 7

1	2	3	4	5	6	7	8	9	10	11	12	13
23	22	21	20	19	18	17	16	15	14			

Riviera Standard Material Included

- Built-In Kitchens
  - Built-In Wardrobes
  - Built-in Sanitary and Vanity Areas
  - Water Heaters
  - Quality Integrated Electric Hob & Extractor
  - Quality Integrated Oven or Microwave Oven  
(Depending on Unit Size)
  - Quality Curtains
  - Quality Wallpaper
  - Bed Linen
  - Washing Machine
- (EMERALD BAY ONLY)

Fully Furnished - What's Included

STUDIO & 1 BEDROOM

- Queen or King Size Bed  
(Depending on Unit Type)
- Queen or King Size Mattress  
(Depending on Unit Type)
- TV's (Lounge and Bedroom)
- Fridge Freezer
- Kitchen Bar Stools  
(Depending on Unit Type)
- Dining Table or Built-in Bar & Chairs
- Lounge Sofa & Chair(s),  
(Depending on Unit Type)
- Lounge Rug
- Coffee Table
- Balcony Table & Chairs

2 BEDROOM

- Queen and or King Size Beds  
(Depending on Unit Type)
- Queen or King Size Mattresses  
(Depending on Unit Type)
- TV's (Lounge and Bedrooms)
- Fridge Freezer
- Kitchen Bar Stools  
(Depending on Unit Type)
- Dining Table or Built-in Bar & Chairs
- Lounge Sofa & Chair(s)  
(Depending on Unit Type)
- Lounge Rug
- Coffee Table
- Balcony Table & Chairs

3 BEDROOM

- Queen and or King Size Beds  
(Depending on Room)
- Queen or King Size Mattresses  
(Depending on Room)
- TV's (Lounge and All Bedrooms)
- Fridge Freezer
- Kitchen Bar Stools
- Dining Table or Built-in Bar & Chairs
- Dining Table Rug
- Lounge Sofa & Chairs
- Large Lounge Rug
- Coffee Table
- Built-In Jacuzzi on Balcony
- Balcony Lounger, Chairs & Tables



**R**  
**RIVIERA**  
**GROUP**

Live The Hollywood Dream



**13 Times**  
Thailand Property  
Awards Winner



**57 Times**  
Asia Pacific Property  
Awards Winner

The developer reserves the right to change details without prior notice. The identified areas are approximates only. Contents and images are for illustrative purposes only.